



Volume 69, Issue 3
November 2012

TIDINGS

Lutheran Women in Mission Rocky Mountain District



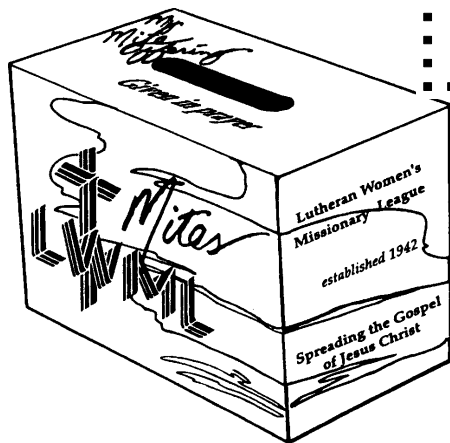
I consider my life
worth nothing to
me, if only I may
finish the race
and complete the
task the Lord
Jesus has given
me...
Acts 20:24

FALL 2012

2012-2014 LWML RMD BIENNIUM
MITE CHALLENGE
**MITE-GIVING + SINCERE PRAYERS
= MISSION GRANTS PAID AND
THE LOVE OF JESUS
SHARED!**

Go to page 4 to see how our mite giving is paying
our Mission Grants this biennium.

**New Treasurer
New Address!**



Remember to send your
mites each month to our RMD
Treasurer. Her address is:

LWML RMD
Beth Nagy, Treasurer
PO Box 270144
Louisville, CO 80027

Inside this issue:

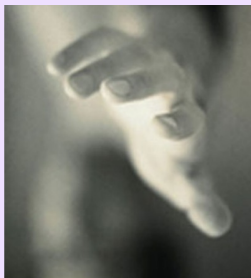
President's Page	2
Pastoral Counselor	3
Mission Grants	4
2013 LWML Conven- tion	5
Out of the Box!	7
Addresses	8

Carol's Corner

LWML RMD 2012-2014 Vision Statement



Reach
Everyone
As
Christ's
Hands



"A Shot at Redemption"

"Life, like golf, is all about how you play out of the rough."

This intriguing title and subtitle from a magazine article caught my attention as I was returning home after one of our recent fall rallies. (By the way, GREAT Fall Rally season ladies of the LWML RMD!)

By the time you read this, many of us will have just finished observing Reformation, so this seemed like a good time to reflect on some good Lutheran words like REDEMPTION and JUSTIFICATION.

In my layman's terms *Redemption* means to buy back or in Lutheran terms, to set free. Also in layman's terms *Justification* means it is "Just as if I'd never sinned" or in more visual terms, it is like the justification tool on a word processing document that lines everything up so it is pleasing to the eye. My way of understanding this is that through Christ I am set free and my blemishes are removed so that I am pleasing to God's eye.

So what does that have to do with the quote at the beginning of the article? I am not a golfer, but my husband is and he acknowledges how easy it is to hit a bad shot and end up in the rough. In that situation, some people may try blasting the ball out of there, shooting for the green and ending up in worse trouble. Other people will concentrate on getting into the fairway before trying to move the ball forward.

In life, when I make a bad choice, I can move full speed ahead down the wrong path or I can ask God to help me get back on the right

path – back in the fairway. Since I'm set free (redeemed) and pleasing to God's eye (justified), what would He have me do in those "rough" situations? Do I glorify my Lord and Savior in the midst of my challenges? Do my actions and my behavior reflect that I am a redeemed child of God? What about you? Have you asked any of those questions lately?

It is my prayer that as Sisters in Christ, we share the Gospel message with everyone around us (even when things aren't going well). In fact, when we find ourselves "in the rough," the best thing (and really the only thing to do) is to stand back and watch our Lord take the club out of our hands to make the next shot! It is His Holy Spirit working through us to bring the message of Redemption and Justification to everyone. Let's "golf" with the Lord, to REACH out and spread that Good News!

"...for all have sinned and fall short of the glory of God, and are justified freely by His grace through the redemption that came by Christ Jesus." Romans 3:23-24

Joy in His Service,
Carol von Soosten

President's Notebook:

A special thank you goes to the ladies of Faith Lutheran Church who hosted our Executive Committee meeting on August 4th. Our churches around the Denver metro area who host our meetings are such a blessing to us and we appreciate your service!



It's the time of year again where we see dramatic changes. The weather is changing. The temperatures are finally cooling off, bringing relief from the extreme temperatures of the summer months. The trees have shed the color of their autumnal leaves, and the landscape has changed to the drab colors of gray.

The department stores have already changed as fall and Halloween are replaced by Christmas displays and holiday sales. Our schedules are rapidly filling, as we prepare for holiday festivities, Advent services and Christmas programs.

And the general election is upon us, promising a change in the direction of our country. When the dust settles and the votes are tallied, some newcomers are certain to be elected to Congress, and perhaps a new president. Regardless of who wins, there will be change. Some will be elated, others will be jaded. What changes will come with these newly elected leaders? What will the future hold?

Certainly, there are changes in our own lives as well. Our children or grandchildren may be starting school, preparing for graduation, or looking ahead to life after college. People we love may be trying to find employment,

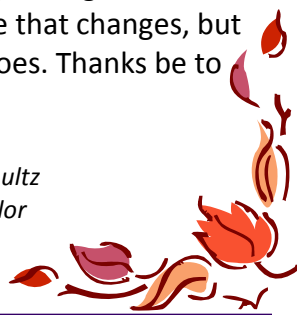
struggling with sickness, or mourning the loss of a loved one.

We see changes all around us. Some are good and cause for joy; others cause grief and sadness to enter our life. Into this ever-changing world, God's Word gives us a foundation that will never be shaken.

Lamentations 3:22 – "The steadfast love of the LORD never ceases; his mercies never come to an end."

God's love for us is the constant that never changes, despite all that happens around us. We see God's love poured down upon us at the first Christmas, as the Son of God took on human flesh and was born of the Virgin Mary. We see God's love shown to us on the cross as Jesus carried all of our sins upon Himself and died to save us. We see God's love shown to us as Jesus rose from the dead, bringing salvation to all who believe in Him. And we see God's love poured upon us in the waters of Baptism, cleansing us from our sins and granting us new life. There's much in life that changes, but God's love never does. Thanks be to God!

Pastor Jonathan G. Schultz
Junior Pastoral Counselor



Changing Times, Changing Seasons

Pastor Schultz
Junior Counselor

When you receive an award for excellent or outstanding work for a job well done, (e.g., report card, job performance review, sports, music) be proud of your accomplishment, as you should be, and:

- Sing praises to the Lord. O Lord, our Lord, how excellent is thy name in all the earth! (Psalm 8:1 KJV). Christ alone is excellent.
- Tell people specifically how Jesus, your Lord and Savior, helped you to achieve the goal.
- Share examples also of how Christ has brought you through difficult times in your life and how you enjoy the celebration of life through Him.

**Faith
Talk
Tips**

Know Your Mission Grants

Judy Piepkorn
VP Gospel Outreach

Mission Grant Recipients for the 2012-2014 Biennium

	<u>Granted</u>	<u>Paid</u>	<u>Unpaid</u>
Training African Pastors for Gospel Outreach in Africa	\$ 7,000	\$ 0	\$ 7,000
Trinity/HOPE Haiti	\$ 5,500	\$ 0	\$ 5,500
Religious Life Curriculum Illustration Costs	\$ 8,000	\$ 0	\$ 8,000
Sunday Sermons for the Zulu of South Africa	\$ 5,000	\$ 0	\$ 5,000
Concordia Seminary, St. Louis Food Bank	\$ 7,000	\$ 0	\$ 7,000
Rocky Mountain District – Debt Assistance	\$ 7,500	\$ 0	\$ 7,500
Concordia Early Childhood Learning Center	\$ 5,000	\$ 3,000	\$ 2,000
Concordia Seminary Graduate School International Student Support	\$ 5,000	\$ 0	\$ 5,000
Outreach Resource Centers	\$ 5,000	\$ 0	\$ 5,000
Support for University Lutheran Chapel – Boulder, CO	\$ 6,000	\$ 0	\$ 6,000
Helping Blind People See Jesus	\$ 4,000	\$ 0	\$ 4,000
God's Word in Their Heart Language – Teaching the Mende to Read Scriptures	\$ 4,450	\$ 0	\$ 4,450
Fostering Faith in the Forest	\$ 3,000	\$ 0	\$ 3,000
	\$72,450	\$ 3,000	\$69,450

Mission Grant Update

Concordia Early Childhood Learning Center

Concordia Early Childhood Learning Center is the first recipient of the 2012-2014 biennium. The initial opening for the center was scheduled for September 4th. We received an urgent request for the needed funds, if possible, to facilitate equipping the center for it's opening. The LWML RMD was able to send a check for \$3,000 to this grant recipient on September 4th. Please pray that this mission grant is successful in holding up a shining light in a community of young families. And please pray as you place your Mites in your Mite Box, that the generosity of our LWML members motivated by their love for Jesus the Savior would inspire us to reach our goal and fund each grant before the end of the 2012-2014 biennium. With that in mind, watch for more updates in the near future.



Jump in with Both Feet! Make a commitment! Give it your all! Take the leap of faith! Decide to attend the 35th Biennial LWML Convention in Pittsburgh, PA, June 27-30, 2013. It will be a splashing experience! Look for details in the Lutheran Woman's Quarterly—Winter issue or online at www.lwml.org.

The Convention Goal Statement:

Quenched by Christ's redeeming grace I am empowered by the Holy Spirit to be a wellspring of the Father's love.

The Objectives:

The Convention attendees will:

- **Glorify the Father, Son and Holy Spirit**
- **Drink deeply from His Word**
- **Share His overflowing love**



Banner Designs & YWRs Needed

Calling all BANNER DESIGNERS!

We need to pick the best design to represent the RMD at the 2013 LWML Convention in Pittsburgh, PA. Look online at www.rmdlwml.org for the specifications of the banner designs and where to send your design for consideration. Submit your design before January 15, 2013.

ATTENTION YOUNG WOMEN!

Would you like to apply to represent the Rocky Mountain District at the 2013 LWML Convention in Pittsburgh, PA? Complete the application under *FORMS* on the RMD website at www.rmdlwml.org and submit your application before January 15, 2013.

Your zone president and society president also received a disc at your fall rally that has all forms, where submittals are to be sent, and other informa-



LWML Peoria Convention 2011
Shelly Stewart, YWR, President Carol, and
Mona Book, YWR

Musings on El Paso



REALLY???
Are we *really* thinking about the
LWML RMD **2014** Convention?
YES!

We did read the evaluations from the 2012 Convention....here are some comments....

What was your favorite experience?

- Bible studies were GRANDE
- The Sweet Dreams activity
- Visiting & sharing with LWML sisters in Christ
- Mariachi San Pablo—their music ministry is such a blessing.

It's in your hands... (concerns to address—*comments by Nancy Kraft*)

- Why did we have to pay room tax, we never had to in years past?
 - *You're right. LWML got out of the 'hotel' business this year. We asked you to book your own room. It was a negotiated price; however, payment was your responsibility. Since YOU don't have a non-profit status, you are charged taxes.*
- What was the 'big deal' about food service costs when we had a meal package?
 - *I have to be honest about this...we should've paid \$115.00 for the meal package BECAUSE there was a 22% food service charge which is mandated by the state and city on hotel food services—yikes!*

We sign a contract 4 years in advance with a hotel which includes room prices and event accommodations. The costs of many items are non-negotiable and we try to find ways to save money in all areas. (Did you know our AV cost in El Paso was half of what we paid in 2010!) I have 'begged' for services and even resorted to bringing LWML candy bars to the hotel staff—it worked! We are always open for suggestions...let us know your concerns. NOW, start thinking about 2014...with your SIC!

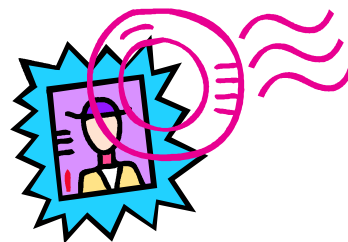
Rays of SONShine

STAMPS FOR BIBLES?

Interested in an easy and inexpensive Mission Project? Then start saving cancelled stamps! Redeemer Lutheran LWML, Deming, New Mexico, began collecting cancelled stamps in the fall of 2006. For every pound of stamps collected, trimmed, and sent to a designated collection point, a Bible is "purchased". The Bible is sent to countries (in their language) around the world. To date, Redeemer LWML has provided 28 Bibles through the Canadian Bible Society.

Members are encouraged to save all their cancelled stamps, whether domestic, foreign, old or new. We have friends, family and even our county assessor's office providing stamps for us! And getting together for a "stamp trimming" party is a great way to ready the stamps for mailing as well as sharing Christian fellowship time.

Stamps for Bibles.....absolutely! If you would like more information on how you, too, can participate in this easy outreach Bible ministry, please contact us at: Redeemer Lutheran LWML, Atten: Stamp Lady
600 West Florida, Deming, New Mexico 88030



LWML—A Secret Society?

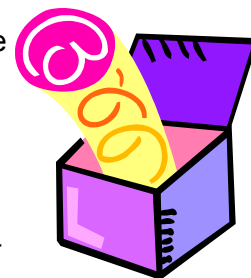
Debbie Yocky
Planner

As fall quickly turns into winter, life begins to settle into a routine. It is easy to get into a rut—attending the same activities, eating the same meals, wearing the same comfortable clothes. Our activities in the LWML can become routine as well. Our circles and sewing groups are back to their regular schedules; fall rallies are finished; Christmas bazaars and luncheons are fast approaching. Everything is settled and organized.

But what about the new women in your congregation or women who suddenly have more time on their hands or were excited about LWML after the convention or a rally? Are you reaching out to them—inviting them to attend—encouraging them to get involved? Some women will read bulletin announcements or newsletters and attend a gathering that looks interesting but many women are waiting for a personal invitation. The first Sunday I attended Christ Lutheran Church in Albuquerque (24 years ago) I was approached by two different people and invited to two different activities. Since I was new in town and knew no one, I attended both activities and immediately became involved. My plan to visit other churches in the area went out the window and I've been a member at Christ ever since. Even with this positive personal experience, I still need to be reminded to take the time to reach out to people and invite them to events. One of the members of our church is very good at meeting new people. Marcia makes a point of greeting new people and telling them about fellowship and Bible study opportunities. But Marcia doesn't stop there, she encourages the rest of us to get out there and meet new people as well.

Be open to new people and new ideas. LWML is not a secret society, but a place for every woman. Make sure that everyone is informed about when you meet and opportunities to get involved. A future leader or a new friend is just waiting for a personal invitation. Don't get stuck in a rut. Be a Marcia.

Out of the Box!



District Officers Serving the Lord With Gladness for the 2012-2014 Biennium

Carol von Soosten, President
president@rmdlwml.org

Colleen Spahr, VP Christian Life
vpchristianlife@rmdlwml.org

Judy Piepkorn, VP Gospel Outreach
vpgospeloutreach@rmdlwml.org

Deb Kruger, VP Human Care
vphumanicare@rmdlwml.org

Sylvia Bean, VP Servant Resource
vp servantresources@rmdlwml.org

Sue Mumm,
Recording Secretary
recordingsec@rmdlwml.org

Beth Nagy, Treasurer
treasurer@rmdlwml.org

Rev. Timothy Storck,
Senior Pastoral Counselor
srcounselor@rmdlwml.org

Rev. Jonathan Schultz,
Junior Pastoral Counselor
jrcounselor@rmdlwml.org

Beth Shroff,
Corresponding Secretary
correspsec@rmdlwml.org

Cindy Stahly, Meeting Planner
meetingplanner@rmdlwml.org

Lesley Nordmeyer, Tidings Editor
tidingseditor@rmdlwml.org

Beth Shroff,
Publications Manager
tidingsbusmgr@rmdlwml.org

Beth Weber,
Committee on Communication
communication@rmdlwml.org

Joan McCracken,
Public Relations Director
publicrelations@rmdlwml.org

Debbie Yocky, Planner
planner@rmdlwml.org

Mary Lu Dietzman,
Archivist/Historian
arch/hist@rmdlwml.org

Susan Weimer, Parliamentarian
parliamentarian@rmdlwml.org

Nancy Kraft,
Convention Coordinator
convcoordinator1@rmdlwml.org

Sue Frauenfeld & Susan Weimer,
Co-Convention Chairmen
convchrman@rmdlwml.org

Anita Werner & Sue Avis,
Co-Convention Registrars
convregistrar@rmdlwml.org

Crista Teter,
Christian Resources Editor
christianresed@rmdlwml.org

Cheryll Graves
Scholarship Endowment Fund
scholarships@rmdlwml.org

Sonja Bell,
Special Gifts Endowment Fund
Coordinator
spgiftsendfund@rmdlwml.org

Marilyn Grasz
Structure Committee Chair
structure@rmdlwml.org

Shelley Stewart,
Committee on Young Women Chair
comygwomen@rmdlwml.org

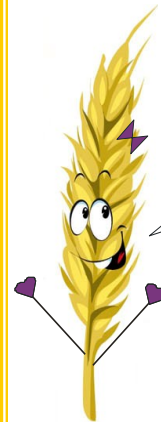
Renee Lamb,
Teen Committee Chair
teens@rmdlwml.org

Jan Bloss,
Nominating Committee Chair
nomcom@rmdlwml.org

Rays of SonShine articles needed for the Tidings!

What has your society/zone done that
has been successful? All articles and
pictures should be sent to
tidingseditor@rmdlwml.org

Connect with your LWML Sisters!
Check out what's new in RMD & enjoy
pictures and memories from past events!
Check out www.facebook.com/LWML.RMD



Hi! I'm Winnow.
I'll be popping up from time
to time as we look ahead
to our 2014 LWML RMD
Convention in Northglenn,
CO.
Winnow means: to remove
the chaff from the grain
by tossing it in the air - like
they did in the Bible.
Watch for me in future is-
sues for reminders and up-
dates.

Quarterly subscription changes should be
sent to:
Beth Nagy
RMD Treasurer
treasurer@rmdlwml.org

Tidings articles/pictures should be sent to:
Lesley Nordmeyer
tidingseditor@rmdlwml.org