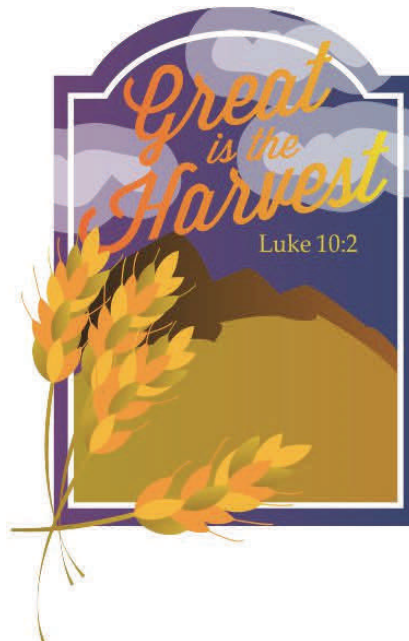




Volume 70, Issue 2
September 2013

TIDINGS

Lutheran Women in Mission Rocky Mountain District



Inside this issue:

President's Page	2
Pastoral Counselor	3
Mission Grants	4
Christian Life	6
Out of the Box	7
Servant Resources	7
Nominating Committee	8
Zone Banner Designs	9
RMD 2014 Convention Gifts of the Heart	10
RMD Heart to Heart Sister	11
Pittsburgh YWR	12
RMD 2014 YWR Application	13
Pittsburgh Pictures	14-15
Addresses	16

*You are cordially invited to
the Forty-seventh Biennial Convention
of the LWML Rocky Mountain District*

*June 20-22, 2014
Ramada Plaza
10 E. 120th Ave - Northglenn, CO*

And he said to them, "The harvest is plentiful, but the laborers are few. Therefore pray earnestly to the Lord of the harvest to send out laborers into his harvest." Luke 10:2

Convention Goal: In response to God's love and mercy, we will reach out with the Gospel.

Watch for more details in the November and January issues of the *Tidings*.



Zone Banner information and Gifts of the Heart for the 2014 convention can be found on pages 9 and 10.

Carol's Corner

LWML RMD 2012-2014 Vision Statement



Reach
Everyone
As
Christ's
Hands



Don't you just love fall? Leaves change color, temperatures become more moderate, and school is back in session. At times and at certain elevations, you could even say the air feels crisp.

For me, fall also means the time when I travel around our great Rocky Mountain District visiting with you in your LWML zones. I find it encouraging that we, just like our sisters in Christ from around the country, are joining together at zone rallies and special events. We are lifting each other and encouraging each other. We are in Bible study, in service, in fellowship, and in mission. **We are Lutheran Women in Mission.**

You don't want to miss out on any of that! Make plans to gather with other women in your zone for a time of renewal and, for many of you, I'll see you there!

Joy in His Service,

Carol von Soosten

From the President's Notebook:

Thank you to two wonderful sisters in Christ who have helped improve the look of LWML RMD. First I want to thank Sarah Hulseley who again did a fantastic job of designing a convention logo for us. Don't you just love the look of our 2014 convention logo?

Second I want to thank Laura Raben who worked to get our LWML RMD website completely re-designed and continues to generously give of her time to work with us in keeping it updated. Now she is working on getting convention registration ready as an online process. (Yes, we will also still accept printed registration forms from the January 2014 *Tidings*.) Now we'll have the option of making both ways available and you may choose which way works best for you. Thank you Sarah and Laura! God has richly blessed us with your talents and service.

Thank you to Eternal Savior Lutheran Church, Lafayette, CO for hosting the August Executive Committee meeting. Would your church like to host our November meeting? How about our February Board of Directors? Meeting Coordinator Cindy Stahly would love to work with you to reserve a place for us. Please contact her.

LWML Sunday

Is your church observing LWML Sunday? Do you have your materials ordered? This year's theme is "You Are My Witnesses." The service focuses on the Scripture verses from Luke 24:44-53. I love the idea of churches throughout our district recognizing Lutheran Women and their service to the Lord while uniting in prayer and praise to our God.

Mission Grant Proposal Deadline – December 1, 2013

Have you been working on writing a mission grant proposal for possible selection at our 2014 LWML RMD Convention? The deadline for submission is **December, 1, 2013**. Check out the application form on the LWML RMD website or contact Vice President of Gospel Outreach Judy Piepkorn for more details.

Prayer requests:

- God's guidance for the planning and implementation of the 2014 LWML RMD convention, that all may be done to the glory of the Lord.

Continued on Page 3

Much of this month's *Tidings* issue is dedicated to the previous LWML convention *Quenched* in Pittsburgh, PA. But even as we take time to reminisce at the previous national convention it's time to look forward to the harvest, to the Rocky Mountain District Convention next June 20-22, 2014 in Northglenn, CO.

Our theme for the upcoming convention is *Great is the Harvest* based upon Luke 10:2, "And he [Jesus] said to them, 'The harvest is plentiful, but the laborers are few. Therefore pray earnestly to the Lord of the harvest to send out laborers into his harvest.'" With these words Jesus begins to exhort the 72 as they are about to be sent out ahead of Him.

The 72 were to go out as lambs in the midst of wolves. No moneybag, no knapsack, no extra clothes, no food, no shelter other than what was given them when they entered a town. No way is that a fair fight. It sounds more like lunch! But Jesus does not send out those laborers empty handed. He provides them with the tools that they will need: His Word and promise. It sure sounds like the laborers will come back bruised and beaten and chewed on by the wolves of this world.

But miraculously they come back after an unidentified amount of time and not one of them was lost. They are even filled

with joy at the task. The demons even subject to them. The Lord reminds them to not find their joy in that, but to find their joy in knowing their names are written in the book of life.

The harvest is great. Not just in foreign countries and regions of the world that are only beginning to hear the Gospel spoken in their own languages but in our towns and communities as well, maybe even in our own homes. Many have never heard the Gospel or have turned their backs on it.

Which means, *right now* the fields are ripe for the harvest. *Right now* laborers are needed. *Right now* is the best time to pray that the Lord of the harvest would send out laborers into the harvest field.

And God does. And He will. And He will continue to answer our prayers. As we each prepare for our upcoming LWML RMD Convention in Northglenn next year let us give thanks for the laborers who have come before, who are working now, and who will be sent in the future.

Blessings,
Pastor Storck

The Harvest is Great!

Pastor Storck
Senior Pastoral Counselor



Carol's Corner Continued

- Encouragement to the newly elected national officers and appointed personnel who will carry on the work of the LWML.
- Safe travel to all who are attending zone fall rallies and events - that many women in the RMD make the time to go to their zone event, to be uplifted in fellowship with LWML sisters, to be fed through Bible study, and to be informed of what is going on in our district.
- To God Be the Glory!



Know Your Mission Grants

Judy Piepkorn
VP Gospel Outreach

Mission Grant Recipients for the 2012-2014 Biennium

	<u>Granted</u>	<u>Paid</u>
Training African Pastors for Gospel Outreach in Africa	\$ 7,000	\$ 3,000
Trinity/HOPE Haiti	\$ 5,000	\$ 5,000
Religious Life Curriculum Illustration Costs	\$ 8,000	\$ 6,000
Sunday Sermons for the Zulu of South Africa	\$ 5,000	\$ 3,000
Concordia Seminary, St. Louis Food Bank	\$ 7,000	\$ 3,000
Rocky Mountain District – Debt Assistance	\$ 7,500	\$ 4,000
Concordia Early Childhood Learning Center	\$ 5,000	\$ 5,000
Concordia Seminary Graduate School		
International Student Support	\$ 5,000	\$ 2,000
Outreach Resource Centers	\$ 5,000	\$ 2,000
Support for University Lutheran Chapel – Boulder, CO	\$ 6,000	\$ 3,000
Helping Blind People See Jesus	\$ 4,000	\$ 2,000
God's Word in Their Heart Language –		
Teaching the Mende to Read Scriptures	\$ 4,450	\$ 2,000
Fostering Faith in the Forest	\$ 3,000	\$ 3,000
	<u>\$71,950</u>	<u>\$43,000</u>

\$43,000

Fall Rally Schedule

Here are the dates and locations of the fall rallies in each zone. (We'll update you if Eastern High Plains schedules a rally.) Please mark the date and plan to **ATTEND** your zone's gathering and consider going to one of the other locations. Guests are always welcome! Invite a friend along for a special time of Bible study and encouragement.

Sept. 7 - Northern New Mexico, Good Shepherd, Edgewood, NM

Sept. 14 - Pecos, Grace, Hobbs, NM

Western, Immanuel, Paonia, CO

Sept. 21 - Southern, Rock of Ages, Colorado Springs, CO

Sept. 28 - South Central, Immanuel, Englewood, CO

Oct. 5 - North Central, Summit of Peace, Thornton, CO

Oct. 12 - Northern, Peace with Christ, Fort Collins, CO

Oct. 19 - Northeastern, Calvary, Wray, CO

Oct. 26 - Four Corners, Zion, Farmington, NM

Nov. 2 - Rio Grande, San Pablo, Ysleta Lutheran Mission, El Paso,
TX



Outreach Resource Centers

Outreach Resource Centers reaches out to students and immigrants with the Gospel of Jesus Christ. Part of this outreach is to provide free ESL or English as a Second Language classes to immigrants who are highly motivated to learn and speak English for employment or to accomplish household grocery shopping, according to the newsletter, *The Minaret*. In the ESL classroom, teachers are demonstrating selflessness, compassion, patience, creativity and the love of Christ, all qualities that also demonstrate the character of Jesus Christ. These classes also provide opportunities for Christians to minister in other ways which leave an impression on the immigrants receiving such care. ESL classes also provide a loving environment in which friendships and relationships can grow. Your MITEs have provided \$2,000 toward the grant of \$5,000 to Outreach Resource Centers towards the work of sharing the love of Jesus. The article below focuses on one such immigrant and her story. Please pray for this woman that the seed planted will take root and grow bringing her to a relationship with the One who died for her as well as for you and for me.

Mission Grant Update

Judy Piepkorn,
VP Gospel Outreach

We have met this lady at grocery store from there our relationship started. Her name is Sridevi, we visited her couple times, she came to our house. Like this we were developing our relationship with her. She was part of our ESL classes. Priya started sharing gospel with her and later she asked that can she have bible in her own language that is Telugu. Poblo missionaries presented bible to her and she was so happy to receive it, so please keep her in your prayers as we have planted the seed of gospel in her heart and now Holy Spirit will lead her.



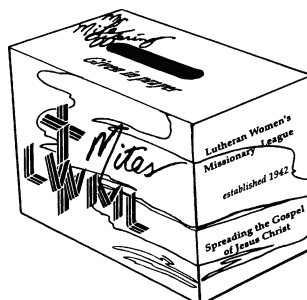
Poblo Missionary Priya presenting a Telugu bible to Sridevi (Hindu woman).



Sridevi was so happy to receive it.

Remember to send your mites each month to our RMD Treasurer. Her address is:

LWML RMD
Beth Nagy, Treasurer
PO Box 270144
Louisville, CO 80027



Christian Life

Colleen Spahr,
VP Christian Life

*Inspirational
RESOURCES*
for Events 2013-2015
SEPTEMBER 2013-DECEMBER 2013



Faith-filled activities for every occasion!

INCLUDES OVER 125 DEVOTIONS, BIBLE STUDIES, ICEBREAKERS, SKETCHES, MISSION SERVANTS ACTIVITIES, AND FRIENDS INTO SERVING HIM® ACTIVITIES



#14223-01

Faith-Filled Activities for Every Occasion!

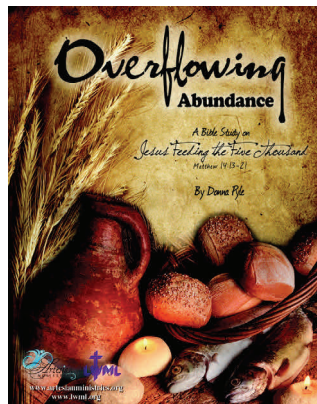
Looking for new ideas, Bible studies, devotions, or Human Care projects? Then check out the new "Quenched! by the Water" Inspirational Resources for Events. This new LWML publication includes over 125 devotions, Bible studies, icebreakers, sketches, Mission Servants activities, and *Friends into Serving Him* activities.....in other words, there is something for everyone! Best of all, the Inspirational Resources is set up to provide materials for September 2013 through August of 2015.; that's two years worth of materials!

All of the monthly devotions (built around a theme) are brand new, as are some of the Bible studies and sketches. Others can be downloaded on your computer at no cost. The appropriate websites are included in the introductory material. The format is easy to follow and the material readily available.

Topics for the rest of this year include "Still Quenched?" (September); "Personal Mission Statement" (October); "Reaping a Bountiful Harvest" (November); and "Got Joy" (December). The Human Care Projects and *Friends Into Serving Him* ideas that are included are practical and user friendly, no matter where you are located or the size of your LWML group. So let yourself be "inspired" as you check out this new resource guide now available from LWML!

Judy Gordon, Christian Life Committee

NEW Bible study from Donna Pyle



Overflowing Abundance is the new DVD/workbook Bible study by Donna Pyle. Donna will be the Bible study leader at our 2014 LWML RMD Convention. This Bible study is based on Jesus' feeding of the five thousand from Matthew 14:13-21. There are six lessons in the workbook and six lessons on the DVD. The DVD and one workbook can be purchased from the LWML store at www.lwml.org for \$75.00 (product number 68932). Additional workbooks are \$7.50 each (product number 68933).

Another option is to borrow the Rocky Mountain District copy of the DVD and one workbook. The cost to you would be return postage and additional copies of the workbook for each member of your group. If you are interested, please contact Colleen Spahr, VP of Christian Life at vpchristian-life@lwmlrmd.org



Fall Rally—What Does This Mean?

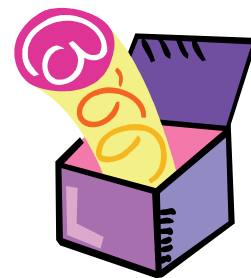
Debbie Yocky
Planner

The weather finally cools down and the leaves begin to change. Children head back to school and an LWML woman's thoughts turn to fall rallies.

If you've been involved with the LWML for any length of time, you know what we mean by a fall rally. But for a person just attending her first LWML meeting, a fall rally may need a little more explanation. She may be familiar with pep rallies for sports and political rallies but neither of these experiences would give her a good mental picture of an LWML fall rally. It's more than a business meeting or a gathering to raise excitement about an event. A fall rally is an opportunity to gather with mission minded women from nearby congregations for fellowship, singing, Bible study and information. This is how we conduct business but it also is the way we encourage and energize each other to focus on sharing the Gospel and funding our mite goals.

I'm not sure that fall rally is the right term for this gathering. Perhaps Fall Zone Gathering or Fall Zone Event would be better. Whatever you call it, make sure to invite new women from your congregation to attend. If you are involved in planning your zone's fall rally, try something new to put a little more zing in your rally. Publish your event early and often. Reach out to women who have stopped attending and gather some information about why they aren't attending. Is the time inconvenient? Is the event no longer meeting her needs? Ask the women who attend the rally what they enjoy the most and what they would like to change. Let's make our fall zone events exciting and uplifting events. It may be the only time someone from your group meets or interacts with women from other churches. I'm excited to attend my zone's fall rally and hope to attend a few more. Hope to see you there.

Out of the Box!



SERVANT RESOURCES – From planning and organizing to leading – there are resources to help you. Use our lwmlrmd.org website to help. Go to the national LWML website: lwml.org for assistance. Use the *LWML Catalog*. Need to update or write Bylaws? Our Rocky Mt District Structure Committee can help. Our Young Women and TEEN Committees can answer questions and point you in the right direction for programs or helps in this area. Call or email us (our contact information is on the last page of the **Tidings**). We're here for YOU!

Servant Resources

Sylvia Bean,
VP Servant Resources

LWML ROCKY MOUNTAIN DISTRICT NEEDS YOU!

Are you interested in serving on a district committee or serving in an elected or appointed position at the District level? We need motivated and qualified women willing to serve. We have reintroduced an idea from the past-the volunteer form. We have redesigned the form, modeling it on the national LWML volunteer form.

Your Zone President will receive a hard copy of the form at the Fall Rally and can make copies as needed. You can also access the form through the Rocky Mountain District website at www.lwmlrmd.org. You can fill out the form online and email it to Planner Debbie Yocky or print the form, fill it out by hand and mail it to her. Your information will be shared with President Carol von Soosten and Nominating Committee Chairman Jan Bloss.

Nominations Needed!

Jan Bloss
Nominating Committee Chairman



The 2014 LWML Rocky Mountain District Convention may seem a long way off at this time, but you all know how time flies when you are having fun!

Because our convention theme is "Great Is The Harvest", I'm asking all of you LWML'ers to prayerfully consider our convention Bible verse: *And he said to them, "The harvest is plentiful, but the laborers are few. Therefore pray earnestly to the Lord of the harvest to send out laborers into his harvest."* Luke 10:2

I'm hopeful you, or someone you know, will be encouraged to serve as a laborer in Christ's harvest. This includes helping to fulfill the mission of the LWML Rocky Mountain District.

Nominees are needed for the following offices:

- President, currently held by Carol von Soosten;
- Vice President of Gospel Outreach, currently held by Judy Piepkorn;
- Vice President of Servant Resources, currently held by Sylvia Bean;
- Junior Pastoral Counselor, currently held by Rev. Jonathan Schultz, who will move up to Senior Pastoral Counselor;

Five members of the Nominating Committee, nine names are needed. Deadline - December 1, 2013. Please e-mail your nominations ASAP to Jan Bloss, Nominating Committee Chairman, nomcom@lwmlrmd.org. Serve the Lord with gladness!



Make a Quilted Lap Robe for your 2014 Zone Banner

The RMD Executive Committee is once again asking each zone to make a quilted lap robe to be used as your zone banner that will be donated to Orphan Grain Train following the convention.

Suggested Size: 36" by 40" (lap robe size)

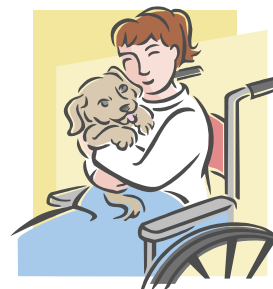
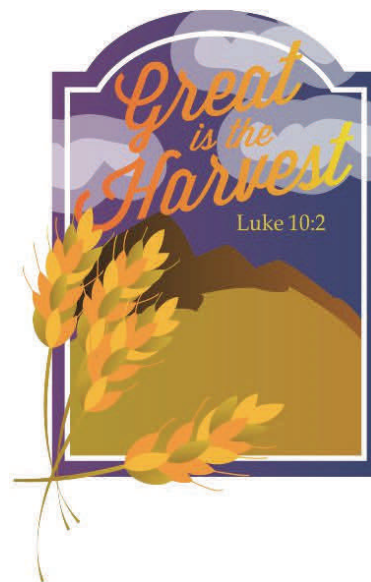
Fabric Suggestion: Cotton Fleece Soft Denim Knit

PLEASE DO NOT ADD THE FOLLOWING TO YOUR QUILTED LAP ROBE

- Beads, Buttons, Bows, Ribbons, Hanging Objects
- Anything that could separate from the quilt

DETAILS:

- The quilted lap robe will be carried in the opening procession by the president, young woman representatives, and the teen representative from each zone.
- Zone names will be printed on a sign and handed out during processional practice and carried in by one of the zone representatives.
- The Quilted Lap Robe banner should include a casing on the back for a 1" dowel with an eye screw on each end, laying the cord flat along the rod and knotting it on the outside of each screw eye. The cord (heavy enough to support the weight of the banner) will stretch when the banner is hung.
- Each zone is to provide a banner pole and stand.
- Quilted Lap Robes will be displayed in the main session room throughout the convention.
- Zones are welcome and encouraged to make more than one quilted lap robe, however only one quilted lap robe will be used in the opening procession.
- Quilted Lap Robe designs may be based on the convention logo, but is not required. Any theme, design, or color is acceptable.
- Talk to your zone president to submit an idea for your Quilted Lap Robe banner design. Let's put these lap robe quilts to work in the harvest field just as it says in our theme verse: *"And He said to them, 'The harvest is plentiful, but the laborers are few. Therefore pray earnestly to the Lord of the harvest to send out laborers unto His harvest.'" Luke 10:2*



Beth Weber, RMD Public Relations Director

These instructions for the banners can also be found on the LWML RMD website:

www.lwmlrmd.org



2014 LWML Rocky Mountain District Convention Ingathering
School supplies to be divided evenly between the
Colorado West and Rocky Mountain Divisions of Orphan Grain Train



- Backpacks (new or gently used - sizes for all students)
- Notebooks (spiral and/or three ring)
- Notebook paper (wide and/or college ruled)
- Ball point pens (blue and/or black)
- Pencils (#2 lead pencils and/or colored)
- Coloring books (all ages)
- Crayons
- Watercolors and brushes
- Chalk (for chalkboards)
- Soccer balls



A variety of school supplies are available in stores now at great prices.
Pick up your items now ~ next June will be here before we know it!



Meet Our RMD Heart to Heart Sister - Zorayma Perez

When I was asked to go to Pittsburgh and attend the Heart to Heart Sisters convention, I was not sure what to expect. I have always been a Christian at heart (though raised and baptized Catholic). But lately, I felt my faith was being tested. As a single mother life has been everything but easy. I knew that I needed a change in my life; a change of perspective, a change of priorities. I was placing unimportant things in front of everything that I once held on a high regard, including God. I didn't like this; who I was becoming was not me, it was not who people knew me as; it was not someone I wanted to show my children I was. I took the invitation to go to Pittsburgh and become a Heart to Heart Sister as a "sign" that God wanted me closer to Him. Although Christians don't follow by signs, we follow by faith. I prayed and told God "if this is where You want me, then this is where I shall be".

Although riding in the same plane half the way with Carol von Soosten, my District President, was in itself a good start, I was still so nervous getting to Pittsburgh. But I was also very excited and happy at the same time. I felt right at home from the start. The welcome we received by the Hosting Committee was great! Margo Depre, Saron Yohannea, Hannah Loum, and Nancy Parra were so encouraging. Their lively attitudes and their clear devotion to the Lord helped it all be even more special. I met so many wonderful ladies the day of my arrival and many more the following days; women from a variety of regions, countries; so many different and unique accents. We all come from diverse backgrounds, but we all had the same thing in common: we are all saved because of Jesus Christ. And we were in Pittsburgh to celebrate that fact. Personally I learned a lot about what it is to be a Christian, to be loved and to know that that love is eternal.

I've always known that I am not the only one that has faced struggles, and I know that struggles are part of life. But now I know that those struggles have brought me so much closer to God. In Romans 14:1 He tells me so! "...we rejoice in our sufferings, knowing that suffering produces endurance, and endurance produces character, and character produces hope, and hope does not put us to shame, because God's love has been poured into our hearts through the Holy Spirit who has been given to us." Listening to all the inspiring stories about how so many women have faced their struggles has helped me see that my struggles, overwhelming as they may seem, will also be faced and beaten. With the love that God has for me and the love and hope that I have in Him, I know that I can face any burdens. My burdens are in His hands because I believe they are.

When I get asked what the best part of visiting Pittsburgh "The most livable city" was, my answer is not so simple. Pittsburgh is a very beautiful city full of breathtaking scenes where one can take long peaceful walks, or just sit on a bench somewhere and take it all in. I personally enjoyed the long walks with some of my new friends (not to mention the delicious food and live music we experienced), and I loved seeing the spectacular panorama of Pittsburgh and its three rivers, especially at night time from the top of Mount Washington.

I know the city had so much more scenery to show me; more beautiful, fascinating scenes of awe. But what made this trip unforgettable were not all these wonders; it was getting to meet so many wonderful new friends. Friends that I shared so much with, so many wonderful times, so many uplifting stories, stories of encouragement. I cried so many tears; tears of joy, tears of sadness, but also tears of praise. Praise for the One that brought us all together for this very special, unforgettable event. In this event, I made so many new friends, friends I can now call sisters, Sisters in Christ, My Heart to Heart Sisters. I arrived in Pittsburgh feeling alone, scared, empty and "dry". Thanks be to God, I left with an uplifted heart, a full heart, a Quenched heart!



RMD President Carol von Soosten, Zorayma Perez, from the Rio Grande zone and Anita Werner, Rio Grande Zone president

YWRs In Pittsburgh

Dear RMDLWML,
Thank you so much for the blessing to serve as one of your YWR's this summer at the National Convention in Pittsburgh. I was truly "Quenched by the Water" as I participated in the convention. It is hard to put into words what the Lord did in my life that week and the new appreciation I gained for the LWML. I can now see why one of the speakers said, "the LWML is the healthiest organization under the LCMS umbrella." When I see my mite box sitting on my piano, I sometimes wonder if my family is really making a difference, but when I hear of ministries that are happening around the globe I am reminded that every little mite adds up. In addition to gaining a new understanding and appreciation of our organization, I truly enjoyed meeting and reconnecting with ladies from all over the world...some who are brand new to LWML and some who are what I like to call the "foundation." I love how God uses each and every one of us, "For Such A Time as This"...which was our theme verse as YWRs. Finally, I cannot think about the convention without mentioning two other "aha" moments... I will never forget the honor it was to walk next to my fellow YWR, Maranda Huss, and President Carol during the Banner Processional and then the next day represent the people of Mexico who are blessed through our Mites as I carried the Mexico flag. Being a part of both processions reminded me that not

One of my highlights, which were many, was learning about our mites. The LWML does so much good with all those coins! We are truly making a difference in our world!

Maranda Huss

only do I represent an amazing group of ladies in the Rocky Mountain District and women all over the world, more importantly I represent our Risen Lord and Savior wherever I am. Thank you again for trusting me to represent the RMDLWML I am eternally blessed!

In His Grip,

Jennifer Gumaer
2013 Pittsburgh YWR
Rocky Mountain District
Rio Grande Zone
Ascension Lutheran Church, El Paso



Maranda Huss, Carol von Soosten
and Jennifer Gumaer

ATTENTION YOUNG WOMEN!

Apply now to become a Young Woman Representative to the

47th Biennial Convention

Northglenn, Colorado

Friday, June 20-Sunday, June 22, 2014

The Lutheran Women's Missionary League Rocky Mountain District is looking for enthusiastic young women (recommended age between 22-35) to participate in the district LWML convention. This program is designed to introduce you, an interested young woman, to all aspects of LWML through the convention experience while discovering firsthand how women of all ages are united in purpose in the LWML. Just fill out the application below and send it to your zone president by **January 1, 2014**.

Young Woman Representative Application

Please type or print information on a separate sheet of paper.

Name _____ Age _____

Address _____ City _____ State/Zip _____

Telephone (_____) _____ - _____ E-mail _____

Occupation _____ Society President _____

Church _____ City _____

1. The LWML motto is "Serve the Lord with Gladness" (Psalm 100:2). How do you do this in your life?
2. What groups/activities have you been active in at church or in your community?
3. What is your knowledge of and level of participation in LWML, if any?
4. Why do you desire to be a Young Woman Representative?
5. What do you feel your strengths are? How do you think you could use these strengths in the LWML?
6. The convention is an interesting and spiritually inspiring event. However, it is also a working session of the organization, and at times, the sessions can be long with the days and evenings packed with events. There is little free time, and it can be very tiring. Understanding all this, can you willingly accept participation in the full scope of the convention?
7. We ask that you have someone who knows you well (perhaps the person who encouraged you to apply) list her name and relationship to you (i.e. friend, society president, etc.) and answer the question: "Why do you feel this individual would make a good Young Woman Representative?"

Applications and recommendations should be received by your zone president by January 1, 2014

Welcome to Pittsburgh!



Lesley Nordmeyer, Sharon Breshears, and Sharon's granddaughter, Ici



Rev. Will Main, Director of the Haskell Light Ministry Lutheran Student Ministry at Haskell Indian Nations University in Lawrence, KS.



Colleen Spahr & Kim Goetsch working on a lap quilt at the servant events.



Shelley Stewart & Cindy Hein.



Elaine Bickel as Mrs. Fred Rogers, humorist interrupter.



Margie Herrmann marking Bibles for the prison ministry at the servant events.



1st timers attending the convention.

RMD Banner with YVRs, President Carol, and Jr. Pastoral Counselor Rev. Jonathan Schultz.



LCMS President, Rev. Dr. Matthew C. Harrison

Welcome to Pittsburgh!



Margie Herrmann, Beth Shroff, & Lesley Nordmeyer trying their hands at “playing the teapot.” Ask when their next performance is scheduled!

YWRs leading a song.



Past national LWML presidents: Virginia Von Seggern; Jan Wendorf; Linda Reiser; Gloria Edwards; & Ida Mall.



Our own Rev. Golter who is now the Executive Director, LCMS Office of International Mission



Sylvia Bean pushing our RMD “Unsung Hero” Ruth Eberle in the procession Saturday morning. What is an unsung hero??? Someone who supports LWML and its mission unselfishly without looking for praise on her actions. Well done Ruth!



Margie Herrmann, Donna Pyle, & Lesley Nordmeyer. Donna Pyle will be at our RMD convention in 2014!

District Officers Serving the Lord With Gladness for the 2012-2014 Biennium

Carol von Soosten, President
president@lwmlrmd.org

Colleen Spahr, VP Christian Life
vpchristianlife@lwmlrmd.org

Judy Piepkorn, VP Gospel Outreach
vpgospeloutreach@lwmlrmd.org

Sylvia Bean, VP Servant Resource
vp servantresources@lwmlrmd.org

Sue Mumm,
Recording Secretary
recordingsec@lwmlrmd.org

Beth Nagy, Treasurer
treasurer@lwmlrmd.org

Rev. Timothy Storck,
Senior Pastoral Counselor
sr counselor@lwmlrmd.org

Rev. Jonathan Schultz,
Junior Pastoral Counselor
jrcounselor@lwmlrmd.org

Beth Shroff,
Corresponding Secretary
correspsec@lwmlrmd.org

Cindy Stahly, Meeting Planner
meetingplanner@lwmlrmd.org

Lesley Nordmeyer, Tidings Editor
tidingseditor@lwmlrmd.org

Beth Shroff,
Publications Manager
tidingsbusmgr@lwmlrmd.org

Beth Weber,
Committee on Communication
communication@lwmlrmd.org

Beth Weber,
Public Relations Director
publicrelations@lwmlrmd.org

Debbie Yocky, Planner
planner@lwmlrmd.org

Mary Lu Dietzman,
Archivist/Historian
arch/hist@lwmlrmd.org

Susan Weimer, Parliamentarian
parliamentarian@lwmlrmd.org

Nancy Kraft,
Convention Coordinator
convcoordinator1@lwmlrmd.org

Sue Frauenfeld & Susan Weimer,
Co-Convention Chairmen
convchrman@lwmlrmd.org

Anita Werner & Sue Avis,
Co-Convention Registrars
convregistrar@lwmlrmd.org

Crista Teter,
Christian Resources Editor
christianresed@lwmlrmd.org

Cheryll Graves
Scholarship Endowment Fund
scholarships@lwmlrmd.org

Sonja Bell,
Special Gifts Endowment Fund
Coordinator
spgiftsendfund@lwmlrmd.org

Marilyn Grasz
Structure Committee Chair
structure@lwmlrmd.org

Shelley Stewart,
Committee on Young Women Chair
comygwomen@lwmlrmd.org

Renee Lamb,
Teen Committee Chair
teens@lwmlrmd.org

Jan Bloss,
Nominating Committee Chair
nomcom@lwmlrmd.org

*New
Web
Page
Address*

Your Strong Suit Bible Study on God's Armor by Donna Pyle Is Available for Lending

The LWML RMD copy of the workbook and the DVD (a \$100 value) is again available for lending. The Bible study is based on Ephesians 6:10-18.

The cost to you is return postage and more copies of the individual workbooks. Individual workbooks can be purchased from the LWML Store at www.lwml.org for \$10.00 each (item # 68931). The last group to borrow it commented, "Our ladies really enjoyed this study." Please contact Colleen Spahr vpchristianlife@lwmlrmd.org if you are interested.



www.lwmlrmd.org