



A publication of  
Lutheran Women's  
Missionary League  
Rocky Mountain  
District

Volume 77 | Issue #2  
September | October  
2021

# Tidings

## Contents

President.....	2
Pastoral Counselor.....	3
Gospel Outreach.....	4
Servant Resources.....	5
Coloring Break.....	5
Gifts of Love.....	6
2022 Gifts from the Heart Flyer.....	7
Around the District.....	8
2022 Nominations.....	8
Upcoming Events.....	9
Fall Rally Dates.....	9
Christian Life.....	10
2022 Gifts from the Heart.....	11
Addresses.....	12

## Connect with Us



[www.lwmlrmd.org](http://www.lwmlrmd.org)



[hello@lwmlrmd.org](mailto:hello@lwmlrmd.org)



[Facebook.com/lwml.rmd](https://www.facebook.com/lwml.rmd)



[Instagram.com/lwmlrmd](https://www.instagram.com/lwmlrmd)

Unless otherwise indicated, all Scripture quotations are from The ESV® Bible (The Holy Bible, English Standard Version®), copyright © 2001 by Crossway, a publishing ministry of Good News Publishers. Used by permission. All rights reserved.

**A**s we watch the changes in the seasons, in the world, and in our lives, we can draw assurance from Scripture that *Jesus Christ is the same yesterday and today and forever.* (Hebrews 13:8)

Fall is in the air for our zones and societies causing us to look ahead to our Fall Retreat and Fall Rally time. Please note the schedule of upcoming events on page 9 and mark your calendars for special events coming your way. Additionally, LWML has set aside a special day for giving called *September to Remember* instead of the Giving Tuesday which usually follows Thanksgiving. Remember LWML with your gifts towards the Mission Goal on September 14<sup>th</sup> this year.

The Events Planning Committee (EPC) has been hard at work planning for the District Convention to be held June 3–5, 2022 in Albuquerque, N.M. Linda Harsh shares ingathering information in this issue of *Tidings*. She also says, “Be sure to come to the convention early! You won’t want to miss our Friday morning Servant Event. We will be tying fleece blankets for Ysleta Lutheran Mission. You don’t need to be crafty for this project. It’s easy, it’s fun, it’s a great way to visit with your sisters in Christ and *Serve the Lord with Gladness* all at the same time!” Watch for more news from the EPC.

Be sure to bring your Mite offerings to your society meetings. Several of our mission grants are still in need of funding. You can check out VP of Gospel Outreach, Beth Nagy’s article as well as the Mites update on page 4. Paid in full grants are written in purple.

Also to note, now is your chance to serve as an officer in LWML RMD or to suggest a grant for our 2022–2024 biennium. The applications are due November 1. Find out how to apply by going to the LWML RMD website or by following the links in the *Tidings* articles.

*Tidings* Editor, Sue Giddings

Debbie Yocky  
PRESIDENT

*Let the word  
of Christ  
dwell in you  
richly*



*Colossians  
3:15-17*

*Biennium  
Theme Verse*

In just a few weeks, many women from across our district will be gathering for the *Be Still* retreat led by Deb Burma. Deb and I began discussing this theme over two years ago. We planned that Deb would lead *Be Still* Bible studies at our 2020 Keystone Convention but then everything changed and the storms of life swept in. We cancelled our in person convention and went into lockdown. Deb and I continued to talk and plan for a way to bring the women of our district together as Deb began writing her new CPH Bible study *Be Still & Know*. I am so excited to share my friend Deb with my LWML Rocky Mountain District sisters.

As fall approaches and children go back to school we are once again faced with rising COVID-19 cases. We may begin to worry and fret. We don't know what the future holds but

we know that we are not alone. Our God is still in control. Our God can command the winds and the seas to Be Still. He is with us through any storm that faces us. Keep your eyes focused on God by staying in the Word and through prayer.

At this time, we are planning on holding Fall Rallies in person. I will be traveling to at least six rallies. I will be sharing information about the LWML Lexington Convention and the new mission grants selected as well as information about our 2022 Albuquerque Convention on June 3-5, 2022. I can't wait to be with many of you in person again.

We will also be continuing our District online Bible study. Watch for more information soon.

*Debbie*

**Be still  
AND KNOW THAT**

**I AM GOD**

**PSALM 46:10**

# A Piece of Peace

Pr. Timothy Davis

SENIOR PASTORAL  
COUNSELOR

As we close out the summer and September approaches, the zone rallies begin to take place. Members of the congregations of our District LWML will be traveling to host churches across the Rocky Mountain District. Opening devotions, reports, minutes from previous meetings and rallies will need to be finalized, and meals will need to be prepared. Time can elude us, our patience will wear thin, and our anxiety level will increase as we juggle the responsibilities of our personal lives with that of our commitments to our zones and congregations.

As we navigate through this world, the word “peace” seems to be a distant concept. In all honesty peace may be a surreal concept that is only achieved on the silver screen or in fairy tales of old. Instead of peace we have chaos swarming all around us. We experience chaos in our personal lives both internally and externally. We live in homes with families that are filled with chaos. The uncertainty of jobs, changing family dynamics, and unexpected health issues confront us constantly in this world. At the end of the day, we bow our heads and close our eyes and pray for just a little bit of peace. We pray for just a “piece of peace.”

In the hymn book of the Bible, we hear the Psalmist write about chaos

in his world. Psalm 46 gives to us a narrative of uncertain times that are surrounded with war and cataclysmic destruction. Finally, the Psalmist speaks from the perspective of God when he writes in 46:10,

*Be still, and know that I am God.  
I will be exalted among the nations,  
I will be exalted in the earth!*

The simple words of Psalm 46:10 give us that gentle reminder that we have not been forsaken. Our God gently reaches out to us and draws us to His side. The world around us crumbles in chaos as “nations rage” and “kingdoms totter” and “the earth melts” at His speaking (46:6). In the middle of rage, tottering and melting God merely says, “Be still, and know that I am God.” Our God takes the most violent and chaotic circumstances and uses them to instill peace in our lives. He takes the violent, chaotic death of His Son and redeems us as His people. No longer does the chaos of the world prevail. He has conquered sin and all its manifestations through the sacrifice of His son on the cross. As the world around us totters and melts, God draws us back to the foot of the cross and the peaceful bliss of the resurrection. He gives to us not just a piece of peace but “the” peace that world cannot give. Amen.



# News of Our Grant Recipients



The Food and Clothing Co-op on the campus of CTS plays a key role in helping students feed and clothe their families during their seminary years. Nearly 60 percent of the students are married with families. When a decision is made to leave jobs and come to the seminary, the students no longer have the same financial flow as they had before, but continue to have the same financial needs. For many families the spouse is unable to find adequate employment in the Fort Wayne area because employers know they will only be available for a short time. Families are therefore in a difficult financial position. One of the ways the seminary seeks to reduce this financial burden is by providing access to a Food and Clothing Co-op. The Co-op is currently able to supply between 80 and 85 percent of all food and household needs at no cost to the student. It is an actual co-op with each family volunteering a certain

amount of time doing the work that needs to be done.

Our grant to the Co-op is used only for the purchase of perishable food items. In total the Co-op spends approximately \$7500 per month on items such as eggs (175 dozen), cheese (250 packages), milk (300 gallons), fruit juice (200 bottles), ground beef (600 pounds), and fresh fruits and vegetables; plus additional grocery and paper products. \$3,250 of the \$8,000 grant has been paid.

University Lutheran Chapel is a dedicated campus ministry at Colorado's largest public university. ULC provides the witness and ministry of Jesus Christ in Word and Sacraments to the students, faculty, and staff at CU, Boulder. Boulder is a very secular community, and the challenges to ministry here are great. ULC ministers to our Lutheran youth, both domestic

Continued on page 6

## Mites

Remember to send mites to our treasurer:

Yvonne Steeby  
LWML RMD Treasurer  
PO Box 1657  
Alamogordo, NM  
88310

Kingdom Kids' Camp at Lutheran Valley Retreat: \$5,000 | Paid in Full

Concordia Theological Seminary Food & Co-op Financial Assistance: \$8,000 | \$3,250 Paid

God Cares About You – "Children's Weekend Food Bag Ministry": \$8,000 | Paid in Full

Mercy Meals of Colorado Springs: \$5,000 | \$3,500 Paid

Interns at Shepherd of the Valley Lutheran Church, Navajo, NM: \$9,000 | Paid in Full

Support for University Lutheran Chapel, Boulder, CO: \$8,000 | \$3,250 Paid

Introducing Muslims to the Savior — Lutheran Heritage Foundation: \$5,000

Filling Haitian Tummies Opens Ears to the Gospel — Trinity HOPE: \$5,000 | \$3,500 Paid

Bringing Christ's Light to Those Living in Darkness — Lutheran Braille Workers: \$8,000

The Table at Bethlehem Lakewood, CO: \$5,000 | \$2,500 Paid

Reaching the Hispanic Community of Commerce City, CO: \$7,996 | Paid in Full

LWML Global Bible Studies by Donna Pyle: \$3,964.28 | Paid in Full

\$77,960.28 | \$49,960.28 64% Paid

\*Bethesda grant removed ...

## Keeping Our Focus

Shelley Stewart

SERVANT RESOURCES  
VP

With the Tokyo Olympics going on, a lot of attention is being put on who is the “best” at something. From being the line leader when we are young, society puts much emphasis on being first. Even though Jesus said multiple times that *many who are first will be last, and the last first* (Matthew 19:30) and *whoever would be great among you must be your servant, and whoever would be first among you must be your slave* (Matthew 20:26-27) we still want to be first. As Christians, we must make sure to keep the focus where it should be. South African

swimmer Tatjana Schoenmaker set a new record in the 200 meter breaststroke and is using her Olympic status to discuss her faith. Before the Olympics she posted a prayer as she traveled to Tokyo, and as she swam in Tokyo she wore a white swimcap with a blue Jesus fish under the words *Soli Deo Gloria* which means *Glory to God Alone* under her green South Africa team cap. She is doing what God called us all to do: point everyone to Jesus. She is being the light in the darkness. We should all follow her lead.



Beth Weber

GIFTS OF LOVE  
ADVOCATE



A grand solar minimum is predicted to be happening with the sun over the next decades. That means that solar energy could be reduced by as much as 7%. For an object in our sky that often depicts permanence, that kind of fluctuation can be a bit unsettling. (It happens about every 200 years.) Whenever our sense of permanence is challenged, it is really a good thing, as God's word speaks to the things that are forever and the things that are not. Most things come and go, shift and change. Yet the only things that remain permanent are God and His Word, and His plan to redeem us through the resurrection and introduce us into His new creation for all eternity, all prepared by Jesus.

So what does that have to do with the

present time? Time and the things in time are opportunities to do God's bidding, to share the Gospel of Jesus, to love God and love our neighbor, all with the goal of God's Spirit calling people to faith so that they may be part of God's permanent inheritance that He has prepared for us. We look at something like our estate plans and we make our plans, but always with an eye to eternity. Your LWML Gift Planning Counselor can help you get your eternally focused plan together. Contact Carol von Soosten for more information. Email: [Carol.vonSoosten@lfn.org](mailto:Carol.vonSoosten@lfn.org) or Phone: 800-741-4138 or the website: [lwmlgiftplan.org](http://lwmlgiftplan.org). Or the Rocky Mountain District GOL Advocate: Elizabeth Weber by Email at [weber4342@acsol.net](mailto:weber4342@acsol.net) or on her cell (970) 361-0794.

---

Continued from page 4

and international, to Christians from other confessions, and witnesses to the lost. ULC offers Lutheran worship every week in which the forgiveness of sins through Word and Sacrament is distributed to us by Christ Jesus Himself. Unlike traditional congregations, ULC cannot be self-sustaining given its mission status and congregational makeup of transient, unemployed, indebted students. ULC is therefore dependent upon mission donations from others. \$3,250 of the \$8,000 grant has been paid.

The newly revised Mission Grant Application Forms are now available online at [lwmlrmd.org](http://lwmlrmd.org) on the home page. The forms are at the bottom of the page. Forms may now be completed and submitted via email.

The deadline for grant application submissions is November 1, 2021. Any questions, please contact Beth Nagy, Vice President of Gospel Outreach at [vpgospeloutreach@lwmlrmd.org](mailto:vpgospeloutreach@lwmlrmd.org).

We still have not reached our mite goal. Is your group finding innovative ways to gather mites, especially during the summer months? As we look forward to our groups being able to gather together again in the fall, let us also gather our mites to support our mission grants and the work of the LWML and our Rocky Mountain District LWML.

If you haven't already done so, check out the Mission Grants Video to see the grants that were approved at the Lexington Convention.

# RMD Convention 2022

## Gifts from the Heart

### Ingathering

 *Hartley House*

- ~ Women's underwear (all sizes, new & in original packaging)
- ~ Feminine hygiene products (in original box or packaging)

*God Cares About You*

- ~ Hand towel, wash cloth, bar of soap & small packet of tissue in a large ziplock bag
- ~ Children's Bible story books

 *Ysleta Lutheran Mission Human Care*

- ~ New toys (ages 1-12)
- ~ Blankets, new or gently used

Every good and perfect gift is from above, coming down from the Father of the heavenly lights, who does not change like shifting shadows.  
James 1:17



Hot Air Balloons and Gifts by Veebezy - Cloud background from Freepik

## From the Four Corners Zone

**T**he societies in the Four Corners Zone have been very busy. Here are some of the activities that they have been and will be involved in.

The officers of the Cortez Women in Mission at Trinity Lutheran Church hosted a brunch on July 31st. Twenty four women in the congregation attended. Pastor Luke Scheele offered the blessing. They will be catering a luncheon in September for The Classic Car Club of America. The proceeds will provide financial assistance to a current seminary student and his family.

Trinity in Gallup will hold a community art show and auction in October. The event will include artists from the church as well as community members who wish to exhibit their art work.

St. Paul's Women in Mission in Durango, CO likes to veer from their regular meeting format in the summer. In June they had coffee and a walk on the river trail. In July they had a potluck at Foxfire Farms Winery in Ignacio, CO. while listening to an outdoor concert.

The Four Corners Zone also held a spring retreat at Zion Lutheran Church in Farmington, N.M. The Bible study topic was *Lord I Can't Handle This* by Jane L. Fryar, LWML 2019.

We would enjoy hearing more about your society's activities too. Please contact Sue Giddings, *Tidings* editor.

## Positions Open for 2022 Nominations

**T**he nominating committee (Christie Peebles, chairman; Judy Delve; Beth Gilleece; and Anita Palenschat) is seeking nominations for the following positions: President, VP of Gospel Outreach, VP of Servant Resources, Junior Pastoral Counselor, and Nominating Committee.

Interested in serving in one of these positions but want to find out more? Any of the current officers would be happy to chat with you about their duties and commitment involved. Check out the *Tidings* to find out their contact information.

Elections will take place at the LWML Rocky Mt. District Convention in Albuquerque, New Mexico, June 2022. Suggestions for nominations may be submitted by individuals or groups. Deadline for nominations is November 1, 2021. Please contact Nominating Chairman, Christie Peebles via phone (text or voice) at 832-247-6500 or email: [nomcom@lwmlrmd.org](mailto:nomcom@lwmlrmd.org).





## Fall Rallies

Northern	Brighton, CO	Zion	September 18
Pecos	Hobbs, NM	Grace	September 18
Southern	Colorado Springs	Holy Cross	September 18
Four Corners	Gallup, NM	Trinity	September 25
Northeastern	Wray, CO	Calvary	September 25
South Central	Bailey, CO	Shepherd of the Rockies	October 2
Western	Grand Junction, CO	Messiah	October 2
Rio Grande	Alamogordo, NM	Trinity	October 9
North Central	Lakewood, CO	Bethlehem	October 16
N. New Mexico	Edgewood, NM	Good Shepherd	October 30

## Upcoming Events

September 10-12	RMD Fall Retreat	Rainbow Trail Lutheran Camp, Hillside, CO.
November 1	Deadline for Nominations	
November 1	Deadline for Mission Grant Proposals	

## Keep Running, Looking to Jesus



As we welcome cooler mornings, school openings, fall foliage and the entry into a new season, summer seems a fleeting memory. Where did the time go? Even with vaccinations for COVID-19, the relief from fears of the pandemic seems short-lived as new mutations of the virus are on the rise. As I look back on the months of summer, I find reassurance and hope in facing the future when reflecting on the LWML 39th Biennial Convention that was held in Lexington, Kentucky from June 24th through the 27th, 2021.

The theme of the Convention was “Running the Race...Looking to Jesus”. The Bible verse it was based on is Hebrews 12:1-2: *Therefore, since we are surrounded by so great a cloud of witnesses, let us also lay aside every weight, and sin which clings so closely, and let us run with endurance the race that is set before us, looking to Jesus, the founder and perfecter of our faith, who for the joy that was set before him endured the cross, despising the shame, and is seated at the right hand of the throne of God.* The reference to “endurance” in this verse is directed at you and me as we run the race, from this life into the next that is set before us; but it also reminds us of the endurance that was set before Jesus as He endured the cross. Surely our race to the finish could never be as challenging!

In the past three weeks, we have witnessed many of the world’s best athletes in the 2020 (held in 2021) Olympics. Endurance personified! We watched as competitors pushed nearly beyond the boundaries of human capabilities, but who endured despite the challenges they faced. From the breakdown of mental health to the breakdown of

physical stamina, we witnessed their humanity. We watched as gymnasts, swimmers, vaulters, rowers, golfers, basketball players, for instance faced it all. Some of those athletes came away as winners, with a medal...a symbol of their ability to endure, to survive hardships, to finish the race before all others.

Rev. Dr. David Maier, President of the LCMS Michigan District, opened his sermon at the Convention by sharing his excitement at being able to meet in-person. His sermon reminded us that our goal must be to go beyond starting the race, but to finishing the race, as well. There will be trials and tribulations that will make the journey hard, but we are called to finish. Just as in the Olympics this past month when two racers’ feet got intertwined, and they both fell. Their dreams of winning a medal vanished. But something miraculous happened. The two runners assisted each other in getting up, and with arms draped around each other, they struggled through their pain to the finish line.

There are many situations during a race, just as in life, of which we have no control. Things that happen that are unexpected. Maybe an equipment mishap, or the racer feels ill the day of the race, or perhaps there is an obstacle on the track. Just like the unexpected impediments we face in life: e.g. sickness, disease, financial difficulties, job loss, loss of family, death. The past few years have held many challenges and trials for God’s people in our race—our race to absorb and spread the Gospel.

Continued on page 11

Continued from page 10

Our ability to be together in a church setting has been difficult due to COVID-19. Many churches and their ministries have been challenged in their efforts to continue and to grow. However, through all of these hardships, God's light has shone through. His many servant leaders organized an in-person LWML National Convention that renewed and invigorated all of those women and men in attendance. Many of the speakers reminded us that Jesus endured the weight of our sins on the cross; and that God doesn't leave

us on our own, but runs before us, beside us, and behind us. He is there to guide us, to lift us up when we get tired, and to encourage us. He gives to each of us His Word and Sacrament, and he brings us together, as women of the LWML, to support each other on our path to the finish line—our home in heaven with Jesus.

May you each feel God's encouragement, love, and guidance as you continue your race into the next season.

Until next time..

## Perfect Gifts from the Heart

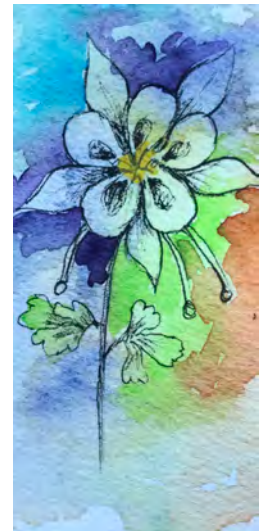
**T**hree outreaches, one from each of our host zones have been chosen as the recipients of our 2022 LWML RMD Convention Gifts of the Heart Ingathering. We are excited to offer a wide variety of "Perfect Gifts" for individuals, groups, and zones to gather, bring, and bless many with the love of Jesus in New Mexico and El Paso, Texas.

**GOD CARES ABOUT YOU IN THE NORTHERN NEW MEXICO ZONE** shares Christ's love to the disadvantaged in ABQ's "international zone." If your group likes to put packets together, here's the project for you! First collect hand towels, wash cloths, bars of soap and small packets of tissues. Then set a date to assemble one of each item into a large ziplock bag. The mission has also requested Children's Bible Story Books to help teach children and their families about their Savior.

**HARTLEY HOUSE IN THE PECOS ZONE** has domestic violence shelters in Clovis, Portales, and Tucumcari. They provide support and provisions to battered women. We can assist this outreach by donating women's underwear (all sizes, new and in original packaging) and feminine hygiene products (in original box or packaging).

**YSLETA LUTHERAN MISSION HUMAN CARE IN THE RIO GRANDE ZONE** shares Christ's love and Gospel to the disadvantaged on both sides of the border. We will be collecting blankets and new toys for their ministry. There is an ongoing need for blankets (new or gently used). YLM gives out blankets in the early fall and throughout the winter to help people through the hard desert winters. They began giving out new toys during the pandemic, let's help them keep this outreach going.

Linda Harsh  
MISSION SERVANTS  
CHAIR



*Start collecting these items now.*

# District Officers Serving the Lord with gladness

**Debbie Yocky**

PRESIDENT

[president@lwmlrmd.org](mailto:president@lwmlrmd.org)

**Brenda Sima**

CHRISTIAN LIFE VP

[vpchristianlife@lwmlrmd.org](mailto:vpchristianlife@lwmlrmd.org)

**Tanya Hall**

COMMUNICATIONS VP

[vpcommunications@lwmlrmd.org](mailto:vpcommunications@lwmlrmd.org)

**Beth Nagy**

GOSPEL OUTREACH VP

[vpgospeloutreach@lwmlrmd.org](mailto:vpgospeloutreach@lwmlrmd.org)

**Shelley Stewart**

SERVANT RESOURCES VP

[vpservantresources@lwmlrmd.org](mailto:vpservantresources@lwmlrmd.org)

**Margaret Blazek**

RECORDING SECRETARY

[recordingsec@lwmlrmd.org](mailto:recordingsec@lwmlrmd.org)

**Yvonne Steeby**

TREASURER

[treasurer@lwmlrmd.org](mailto:treasurer@lwmlrmd.org)

**Rev. Timothy Davis**

SENIOR PASTORAL COUNSELOR

[srcounselor@lwmlrmd.org](mailto:srcounselor@lwmlrmd.org)

**Rev. Pete Scheele**

JUNIOR PASTORAL COUNSELOR

[jrcounselor@lwmlrmd.org](mailto:jrcounselor@lwmlrmd.org)

**Cindy Stahly**

MEETING MANAGER

[meetingmgr@lwmlrmd.org](mailto:meetingmgr@lwmlrmd.org)

**Sue Giddings**

TIDINGS EDITOR

[tidingseditor@lwmlrmd.org](mailto:tidingseditor@lwmlrmd.org)

**Anita Werner**

PLANNER

[planner@lwmlrmd.org](mailto:planner@lwmlrmd.org)

**Mary Marten**

PARLIAMENTARIAN

[parliamentarian@lwmlrmd.org](mailto:parliamentarian@lwmlrmd.org)

**Chris Bostron**

CONVENTION COORDINATOR

[convcoordinator@lwmlrmd.org](mailto:convcoordinator@lwmlrmd.org)

**Nancy Kraft**

**Linda Ballenthin**

CONVENTION CO-CHAIRMAN

[convchrman@lwmlrmd.org](mailto:convchrman@lwmlrmd.org)

**Joey Schilling**

CONVENTION REGISTRAR

[convregistrar@lwmlrmd.org](mailto:convregistrar@lwmlrmd.org)

**Susan Avila**

ARCHIVIST-HISTORIAN

[arch-hist@lwmlrmd.org](mailto:arch-hist@lwmlrmd.org)

**Christie Peebles**

CHRISTIAN RESOURCES EDITOR

[christianresed@lwmlrmd.org](mailto:christianresed@lwmlrmd.org)

**Beth Shroff**

PUBLICATIONS MANAGER

[tidingsbusmgr@lwmlrmd.org](mailto:tidingsbusmgr@lwmlrmd.org)

**Lori Schick**

SOCIAL MEDIA ADMINISTRATOR

[socialmedia@lwmlrmd.org](mailto:socialmedia@lwmlrmd.org)

**Shelley Stewart**

PUBLIC RELATIONS DIRECTOR

[pr@lwmlrmd.org](mailto:pr@lwmlrmd.org)

**Janet Krogh**

PRAYERS

[prayers@lwmlrmd.org](mailto:prayers@lwmlrmd.org)

**Linda Harsh**

MISSION SERVANTS COMMITTEE CHAIRMAN

[missionservants@lwmlrmd.org](mailto:missionservants@lwmlrmd.org)

**Sue Frauenfeld**

SCHOLARSHIP COMMITTEE CHAIRMAN

[scholarship@lwmlrmd.org](mailto:scholarship@lwmlrmd.org)

**Susan Weimer**

STRUCTURE COMMITTEE CHAIRMAN

[structure@lwmlrmd.org](mailto:structure@lwmlrmd.org)

**Lisa Weber**

COMMITTEE ON YOUNG WOMEN CHAIRMAN

[comygwomen@lwmlrmd.org](mailto:comygwomen@lwmlrmd.org)

**Mary Redeker**

TEEN COMMITTEE CHAIRMAN

[teens@lwmlrmd.org](mailto:teens@lwmlrmd.org)

**Heidi Norton**

HEART TO HEART SISTERS COMMITTEE  
CHAIRMAN

[heart2heart@lwmlrmd.org](mailto:heart2heart@lwmlrmd.org)

**Christie Peebles**

NOMINATING COMMITTEE CHAIRMAN

[nomcom@lwmlrmd.org](mailto:nomcom@lwmlrmd.org)

**Beth Weber**

GIFTS OF LOVE ADVOCATE

[giftsoflove@lwmlrmd.org](mailto:giftsoflove@lwmlrmd.org)

**JoAnn Beegles**

FOUR CORNERS ZONE PRESIDENT

[fourcorners@lwmlrmd.org](mailto:fourcorners@lwmlrmd.org)

**Janet Krogh**

NORTH CENTRAL ZONE PRESIDENT

[northcentral@lwmlrmd.org](mailto:northcentral@lwmlrmd.org)

**Joline Christensen**

NORTHEASTERN ZONE PRESIDENT

[northeastern@lwmlrmd.org](mailto:northeastern@lwmlrmd.org)

**Kay Moeller**

NORTHERN ZONE PRESIDENT

[northern@lwmlrmd.org](mailto:northern@lwmlrmd.org)

**Barbara Wertz**

NORTHERN NM ZONE PRESIDENT

[northernnm@lwmlrmd.org](mailto:northernnm@lwmlrmd.org)

**Christina Bean**

PECOS ZONE PRESIDENT

[pecos@lwmlrmd.org](mailto:pecos@lwmlrmd.org)

**Belinda Burmeister**

RIO GRANDE ZONE PRESIDENT

[riogrande@lwmlrmd.org](mailto:riogrande@lwmlrmd.org)

**Lori Williams**

SOUTH CENTRAL ZONE PRESIDENT

[southcentral@lwmlrmd.org](mailto:southcentral@lwmlrmd.org)

**Karen Mann**

SOUTHERN ZONE PRESIDENT

[southern@lwmlrmd.org](mailto:southern@lwmlrmd.org)

**Vera Loose**

WESTERN ZONE PRESIDENT

[western@lwmlrmd.org](mailto:western@lwmlrmd.org)