

A publication of
Lutheran Women's
Missionary League
Rocky Mountain
District

Volume 78 Issue #4
January | February
2022

Tidings

Contents

President	2
Pastoral Counselor	3
Gospel Outreach	4
Servant Resources	5
Communications	5
Gifts of Love	6
Gifts from the Heart	6
Gifts from the Heart Flyer	7
Upcoming Events	8
2022 Convention Personalities	8
Around the District	9
Christian Life	10
2022 Convention Registration	11
Addresses	12



2022 LWML RMD
CONVENTION

June 3-5

Marriott Albuquerque

Every
good gift
and every
perfect gift
is from
above,
coming
down from
the Father
of lights,
with whom
there is no
variation
or shadow
due to
change.

Connect with Us



www.lwmlrmd.org



hello@lwmlrmd.org



[Facebook.com/lwml.rmd](https://www.facebook.com/lwml.rmd)



[Instagram.com/lwmlrmd](https://www.instagram.com/lwmlrmd)

Unless otherwise indicated, all
Scripture quotations are from The
ESV® Bible (The Holy Bible, English
Standard Version®), copyright ©
2001 by Crossway, a publishing
ministry of Good News Publishers.
Used by permission. All rights
reserved.



The Events Planning Committee and the Convention Chairmen have been in the process of planning Bible studies, speakers, enrichment opportunities, worship, and offering recipients for our 51st LWML RMD Convention in Albuquerque this summer. The goals and objectives, theme, and convention logo have been decided. The hotel has been chosen and registration forms are ready to be received. Plans are being completed and excitement is building!

Find out more in this issue of *Tidings*.

Debbie Yocky
PRESIDENT

*Let the word
of Christ
dwell in you
richly*



*Colossians
3:15-17*

*Biennium
Theme Verse*

Happy New Year! God's blessings as we begin another year. Each new year is filled with so many possibilities. 2022 will be a year filled with joy and sorrow, laughter and tears, and LWML hugs. This year will be a time of great change for me. My time as LWML Rocky Mountain District President is coming to an end and I am also retiring from my job with the Albuquerque Public Schools in the fall of 2022. I have been so blessed over the past four years as your president. I am not just sure what the future holds but look forward to many new adventures.

What are your hopes and dreams for 2022? Do you hope to spend more time with family? Learn a new skill or take on new responsibilities? Whatever new adventures come your way I pray that you will continue to serve the Lord with gladness as part of the LWML. I am looking forward to gathering with you this summer.

June 3-5, 2022 the LWML Rocky Mountain District will gather in

convention in Albuquerque, New Mexico. Albuquerque has been my home for over 30 years and I am excited to share it with you during our 51st Convention. Our convention theme is Perfect Gifts from Above, based on James 1:17 and the logo incorporates the Rocky Mountains and the balloons that fill the Albuquerque sky each fall. This convention will be a time to celebrate our past 50 conventions and look to the future. President Debbie Larson will join us as our LWML Representative. Two Mission in Action speakers will share updates on how God is using our Mites and prayers to spread the Gospel and further God's Kingdom. Mariachi San Pablo will provide entertainment for the Saturday Fiesta Banquet as well as participate in worship services. Servant events and a Moving for Mites activity will be held on Friday morning. Watch for more details and registration information soon.

Debbie



Jesus, Our Light in the Darkness

Pr. Timothy Davis

SENIOR PASTORAL
COUNSELOR

The gift of our Savior Jesus Christ is more than just a one-night celebration. The day of Christmas may be in the rear-view mirror for the world, but we continue to celebrate the birth of Christ every day in our lives. From the season of Christmas, we transition into the season of Epiphany. The season of light reminds us that Christ is the light of the world.

In the first chapter of John, we read and learn that Christ has come into a world full of darkness. As we move from December to January our year starts over. We look to 2022 and make plans regarding how we will engage the world around us. Over the last couple of years chaos has surrounded us every day. Day by day changes take place on how we are to interact with those in our midst. Change fatigue has become a part of our vocabulary and our emotions and mental health have been challenged.

Instead of there being light in the world and in our lives, there is a lot of darkness. Financial challenges that we never thought of now confront us. Protection from illnesses and dress codes are part of our daily routine. Uncertainty, chaos, and a lack of stabilization swarm around us. The changes bring darkness, and that darkness can consume us to point of complete despair.

Turning back to Christmas points us to the joy of Easter. Yes Easter! We reflect on the gift of our Savior Jesus Christ but at the same time we are drawn through His life in the time of Epiphany. We start with the arrival of the Magi and the gifts they bring with them. The arrival of the Magi

isn't merely about the gifts but more than that the Magi themselves. The Magi were Gentiles from the east, and they had already heard about the promise of the Messiah through Daniel and God's people during the time of the Babylonian captivity. They knew that the star in the heavens meant the king had arrived. In Matthew we learn that the Magi visited King Herod to learn about where the King was located. We know how King Herod responded to the news of his authority being challenged. Kill the babies was his response. The Magi came to worship the king by following the light in the heavens. The Magi came to worship the light of the world. Yet as they returned by a different route King Herod began his ruthless slaughter of innocent children by killing all the babies under the age of two. Unspeakable darkness was upon the town of Bethlehem.

Even though Herod tried to extinguish the light of the world, Christ the light of world prevailed and fulfilled what God had sent Him to do. He came into this world of darkness and conquered sin, death, and the devil. No longer do we cower in fear when darkness surrounds us. We know that in the life, death, and resurrection of Christ the darkness has been overcome. As Christ conquered death we are assured that His victory is our victory!

Every day we live our lives in the Christmas message. We reflect on the babe in the manger who lives that perfect life and dies the perfect death and then conquers death so that we will live for eternity in the resurrection.



Becky Meyer

GOSPEL OUTREACH
COMMITTEE MEMBER



The Table

Part of the mission statement of Bethlehem Lutheran Church in Lakewood, Colorado reads, “We believe Christianity is not just a part of life, but an all-encompassing way of life that is filled with the abundant love, mercy, and faithfulness of an amazing God.”

The church has two ministries that work together to demonstrate this love, mercy, and faithfulness to the working poor and homeless populations on the west side of the Denver Metro area: Living Well Showers and The Table. Every Thursday at 4 pm, Living Well Showers provides a mobile trailer with resources where guests can shower, brush their teeth, get a fresh pair of socks and undergarments, and temporarily store their belongings in a secure environment. Then at 6 pm, The Table provides a meal followed by worship and Christian fellowship. Incorporating

both food and worship allows The Table to provide food for the attendee’s soul and body. Volunteers from Bethlehem assist with the service, the music, and cooking and serving the meal. The Table, which is funded by attendees and donations, was selected as a Rocky Mountain District LWML Mission Grant recipient. The \$5,000 grant, which is not yet funded, will help offset rising costs of food as attendance increases. You can follow these wonderful ministries on Facebook: <https://www.facebook.com/TheTableatBethlehem> and <https://www.facebook.com/livingwellshowers>

Great News! Two more grants are fully paid — University Lutheran Chapel, Boulder, CO and Concordia Theological Seminary, Fort Wayne, Food Co-Op. That leaves three grants to be paid. All glory to God for the mite donations that serve Him.

Mites

Remember to send mites to our treasurer:

Yvonne Steeby
LWML RMD Treasurer
PO Box 1657
Alamogordo, NM
88310

Kingdom Kids’ Camp at
Lutheran Valley Retreat:
\$5,000 | Paid in Full

Concordia Theological
Seminary Food & Co-op
Financial Assistance:
\$8,000 | Paid in Full

God Cares About You –
“Children’s Weekend Food
Bag Ministry”:
\$8,000 | Paid in Full

Mercy Meals of Colorado
Springs:
\$5,000 | Paid in Full

Interns at Shepherd of the
Valley Lutheran Church,
Navajo, NM:
\$9,000 | Paid in Full

Support for University
Lutheran Chapel, Boulder,
CO:
\$8,000 | Paid in Full

Introducing Muslims to the
Savior — Lutheran Heritage
Foundation:
\$5,000 | \$2,500 paid

Filling Haitian Tummies
Opens Ears to the Gospel —
Trinity HOPE:
\$5,000 | Paid in Full

Bringing Christ’s Light to
Those Living in Darkness —
Lutheran Braille Workers:
\$8,000 | \$2,500 paid

The Table at Bethlehem
Lakewood, CO:
\$5,000 | \$2,500 Paid

Reaching the Hispanic
Community of Commerce
City, CO:
\$7,996 | Paid in Full

LWML Global Bible Studies
by Donna Pyle:
\$3,964.28 | Paid in Full

\$77,960.28 | \$67,460.28
86% Paid | \$10,500 still
needed

*Bethesda grant removed ...

Count On It

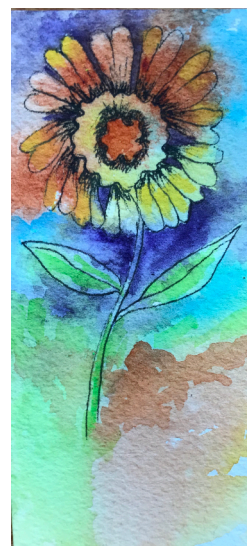
As we turn our calendars to a new year, we start planning for the things to come. But we don't really know what's to come. Who knew 2020 would not really happen at all? 2021 was better, but still not "normal." We can hope and make plans for trips and vacations in 2022, but when they get here...

A senior at my son's high school died in a car accident this week. I'm sure she was making plans for graduation and after. I'm sure her family was planning too. But not planning for a funeral. This made me think of Luke 12:13, the Parable of the Rich Fool. This man made lots of great

plans, but then he died, and all his plans and wealth were for nothing. What happens then? Hopefully we know where we are going, but what about those around us? Do they know Jesus? Will they be saved? If someone around us were to pass tomorrow, have we done our job of sharing the Gospel so they can be sure of where they will go too?

Even though all these thoughts are "dark" and can get us down, we have the confident faith in Jesus. He is our Savior and that will never change. No matter what. You can count on it.

Shelley Stewart
SERVANT RESOURCES
VP



A New Look for a New Year

As we start in 2022, the LWML RMD website has undergone a facelift. We will continue to build out the website throughout the year.

Yes. You will be looking for something and not find it. Please contact us. You can reach us at hello@lwmlrmd.org. We will work to get your question to the right person.

There are times throughout the year when visitors will need to access items from the website, usually in the form of applications—mission grants, scholarship, convention representatives—these will be found on the home page to help visitors navigate and not find old versions.

Events will usually have a page that will include information such as dates, location, registration, and the like. You can check out the Convention page to get the latest

information for our 2022 event. (And yes, we will continue to add information as we get it.)

Tidings' page will include the latest issue (Read Now) and The Archives section where you will find previous issues (not the current one) since January 2012.

Please note address changes on [page 12](#). Some are name changes such as communications instead of vpcommunications; and others no longer exist. If you need to contact someone who doesn't have an address, you can usually contact the president or myself and we'll get you connected with the right person. We hope to find the right balance of good stewardship and privacy. There might be times when we'll set up a short-term email. We'll see what happens in the new year. Thank you for joining us on this adventure.

Tanya Hall
COMMUNICATIONS VP



Beth Weber

GIFTS OF LOVE
ADVOCATE



Who will be best blest by gifts from my estate someday? For most, attention turns first toward family. That can be a godly response, as God has given us great responsibility to teach and nurture and care within our families so that we know Jesus. Yet family inheritance is not an obligation or entitlement; it is a gift of God's gifts to family. Spend time thinking about how those family gifts will bless family members.

Just as you think about how your family will be blessed, you can also ponder about the blessing that will take place in ministries that you support with God's gifts. Try to

picture and imagine someone coming to faith and inheriting eternal life through the ministry you support with your estate gift. Then pray for God to make that happen.

Your LWML Gift Planning counselor can help you focus your God given attention on ministry gifts. Contact Carol von Soosten for more information by any one of the following methods: Email: Carol.vonSoosten@lfnd.org, Phone: 800-741-4138 or at lwmlgiftplan.org; or by contacting our Rocky Mountain District GOL Advocate Elizabeth Weber by email at weber4342@acsol.net or on her Cell phone: 970-361-0794.

Linda Harsh

MISSION
SERVANTS CHAIR



Perfect Gifts From Above Ingathering

We were blessed with the Greatest Gift at Christmas! Now it's our turn to be a blessing during this New Year. One way you, your circle, group, or zone can be a blessing is to gather some of the requested items for our Gifts of the Heart ingathering in Albuquerque. Here is a recap of the wish lists for the three outreaches we will be supporting at convention. Feel free to copy the poster on the following page to advertize the ingathering.

God Cares About You - shares Christ's love to the disadvantages in ABQ's "international" zone

Children's Bible Story Books, new or used in good condition

Hygiene Kits, hand towel, wash cloth, bar of soap and small packet of tissue in a large ziplock bag

Hartley House - provides support and provisions to battered women

New Underwear, all sizes and in original packaging

Feminine Hygiene Products, in original box or packaging

Ysleta Lutheran Mission Human Care - proclaims the Gospel on both sides of the border

Blankets, all sizes, new or gently used

New Toys, for ages 1 through 12

Puzzles, Legos, toy vehicles, learning toys, plush toys, action figures, dolls, fidget toys,

Coloring books, cooking and kitchen, craft kits and board games

RMB Convention 2022

Gifts from the Heart

Ingathering



- ~ Women's underwear (all sizes, new & in original packaging)
- ~ Feminine hygiene products (in original box or packaging)



- ~ Hand towel, wash cloth, bar of soap & small packet of tissue in a large ziplock bag
- ~ Children's Bible story books



*Ysleta Lutheran
Mission Human Care*

- ~ New toys (ages 1-12)
- ~ Blankets, new or gently used

Every good and perfect gift is from above, coming down from the Father of the heavenly lights, who does not change like shifting shadows.
James 1:17



Hot Air Balloons and Gifts by Vecteezy - Cloud background from Freepik



Enriching Speakers, Leaders, and Sessions

With a goal of *loved by Jesus, we recognize and believe all our blessings come from Him* and four objectives that all in attendance: 1.) Come to realize that all our gifts are from God, 2.) Praise God for His unfailing goodness, 3.) Tell others of God's unchanging love for them, and 4.) Celebrate the work the Lord has done in the RMD at our 51st Convention, the LWML RMD has chosen a strong list of speakers for the convention.

Pastoral Counselor Rev. Pete Scheele will lead Bible study and RMD President Roger Schlechte will serve as proclaimer at our Opening Worship Service on Friday evening at Christ Lutheran Church. Rev. Stephen Heimer and Mariachi San Pablo will assist with worship.

Pastor Steven Heimer and the Ysleta Mariachis San Pablo will also entertain us at our fiesta banquet on Saturday night.

Two Mission in Action Speakers will educate us about the ministries they

serve. Rev. Tim Norton will speak about his work with the church he is serving in Navajo, New Mexico. German Montiel, newly appointed director at God Cares about You will speak about their work in the Albuquerque area. Both of these ministries were funded by your Mite offerings.

As our LWML National representative, President Debbie Larson will lead an enrichment session. Eden Keefe will lead a Visual Faith session and Heidi Norton will lead a Heart2Heart session. Attendees will be able to go to all three sessions.

There will also be pre-convention activities on Friday morning. A Move for Mites activity will be held in celebration of 80 years of LWML. There will also be servant activities such as fleece quilt tying for Ysleta Mission and card making.

Upcoming Events

February 1	Time to renew your <i>Quarterly</i> . (See the 2021 Nov/Dec <i>Tidings</i> for a renewal form)
February 4-5	EC and Board of Directors meet in Colorado Springs
March 1	Deadline to submit names for YWRs and Teens.
March 31	Early Registration for Convention ends. (\$105 before March 31 and \$125 after April 1)
April 2	EC meets in Albuquerque
June 3-5	51 st Annual LWML Rocky Mountain District Convention



Every Good Gift

At Christmas, we celebrated the best gift, Jesus. We thank God for the abundance of blessings and gifts he has bestowed on his people.

The LWML RMD has designated the following as recipients of our three convention offerings. The first offering will support our 2022-2024 Mite Goal.

The second offering will go to the Lighthouse Mission in Clovis, N.M. This mission offers homeless

sheltering, feeds the hungry, clothes the less fortunate and helps the addicted to find freedom.

The third offering goes to Tender Loving Care Community in Albuquerque, N.M. This group serves homeless women by helping to teach them sewing skills to support themselves.

Join us in sharing God's gifts at our 51st convention.

Meet us at the Marriot

The Marriot in Albuquerque located at 2101 Louisiana Blvd, NE has a great convention center located in the hotel. It offers a separate entrance and is separate from the main lobbies and rooms. Here is the link to see photos and amenities that are offered: [Marriot.com/ABQNM](https://www.marriott.com/ABQNM)

Here's the link you can use to make reservations:

[Book your group rate for Lutheran Women's Missionary League - Rocky Mountain District Meeting](#)

Event Summary: Lutheran Women's Missionary League - Rocky Mountain District Meeting Start Date: Thursday, June 2, 2022 End Date: Sunday, June 5, 2022

Last Day to Book: Monday, May 9, 2022 Marriott Albuquerque for 109 USD per night

The hotel will also host our meals and banquet. Please refer to the registration form ([page 11](#)) for meal plan and banquet prices.



Reflections and New Beginnings

You...are a letter from Christ...written not with ink but with the Spirit of the Living God, not on tablets of stone but on tablets of human hearts.

2 Corinthians 3:3

The New Year of 2022 has arrived. A new start. A new beginning. A time of hope. I am always privately excited at the thought of getting another chance to “up my game,” to do better. A chance to redeem myself, to clean the slate of all of my shortcomings, a time to put to rest all of my sins from the past, and a time to start anew in my walk with Christ.

You may not be too happy with the shape you are in. Some of us feel disappointed and discouraged. With Covid-19 and its mutations in our midst, some of us have just given up after a couple years of isolation, frustration, and loneliness. As we face a new year, we may be plotting how to just take the path of least resistance.

But then we remember...God is depending upon us. We have lots of work to do. The world is filled with people who do not yet know Him, who do not know of his saving power and His eternal love for us. God is depending upon me, upon you. His reputation is tied up with our conduct. What a huge responsibility He has given us. We represent Him to people who may have never heard of Him. What they choose to believe about Him is influenced by what each of us says

and does. That is a big assignment—but what an honor!

As a whole year stretches before me, I choose to reflect on what has passed. I know from my years of living that I am a child of God. I believe that Jesus is with me and my faith in Him will enable me to follow any path He chooses for me. Jesus has been my greatest gift. He died for me and my sins, and I trust that by following Him, my life and yours, will be filled with purpose, good works, and through faith in Him, a channel of His love to others. The Bible reassures us that He died for us, and that the start of a New Year gives each of us the redeeming purpose and opportunity of living for Him. We each face the New Year knowing the special role Jesus has for us. We have been saved to serve our Lord and Savior.

May each of you find your purpose in serving Him in 2022. If you are interested in finding ways to enrich your life, the LWML offers numerous ways to serve our Lord. Talk with a member of the LWML RMD Executive committee on specific ways that you can use your resources to serve Him. The LWML abounds with many opportunities for sharing the love of Jesus with others.

May your New Year be a blessing to God.

Until next time...

Convention Registration & Meal Form

LWML Rocky Mountain District Convention, June 3-5, 2022

Marriott Albuquerque, 2101 Louisiana Boulevard NE, Albuquerque, New Mexico 87110

General Instructions

Please print in black or blue ink.

Please check box:

- ☐ If you are a First-Time Attendee
☐ If you are a Teen

All registrants, including delegates, be sure your zone name is listed, and the full **TOTAL** remittance is enclosed. Incomplete forms will be returned to you. A letter of confirmation will be sent by e-mail or regular mail to all who register by May 1, 2022. This form is for **CONVENTION REGISTRATION & MEALS ONLY**

Please check one appropriate category for registration type:

- ☐ A: General Registration
☐ B: Group Delegate
☐ C: Group Alternate
☐ D: Zone Young Woman Representative
☐ E: Zone Teen
☐ F: District Board Member (voting)
☐ G: District Board Member (non-voting)
☐ H: District Committee Member (non-voting)
☐ I: Past District President, living in district (voting)
☐ J: Past District President (non-voting)
☐ K: Pastor (No Registration Fee)

Due to room and food commitments there will be **NO** refunds after June 1, 2022.

Everyone may attend all the Enrichment Sessions. Please mark the order of your attendance preference with the letter of the Enrichment Sessions. Due to room size and safety issues, please attend the Enrichment Sessions in the order listed on your badge.

To decrease wait time during sign-in, please fill out a current copy of the Meeting and Events Participation Information, Acknowledgment, Waiver, and Release Form, which will be emailed with your registration confirmation, and bring it with you to the registration table in Albuquerque in order to receive your registration packet and nametag.

Blank copies of the form will be available at the registration table; your wait time will be longer.

Duplicate this form for your records

PERSONAL INFORMATION

Badge Name _____

Last

First

Mailing Address _____

City _____ State _____ Zip _____

Phone _____ Fax _____

Email Address _____

Group _____

Church _____ Zone _____

REGISTRATION AND MEAL CHOICES

	Fees	Total
<input type="checkbox"/> Pastor Registration		
<input type="checkbox"/> Early Registration (Postmarked by April 1, 2022)	\$105.00	\$ _____
<input type="checkbox"/> Registration (after April 1, 2022 or on-site)	\$125.00	\$ _____
<input type="checkbox"/> Spouse Registration (Name) _____	\$ 50.00	\$ _____
<input type="checkbox"/> One-Day Attendance: <input type="checkbox"/> Friday <input type="checkbox"/> Saturday	\$ 50.00	\$ _____
<input type="checkbox"/> Meal Package: 2 breakfasts, 1 lunch, 2 dinners (includes Sat banquet)	\$120.00	\$ _____
<input type="checkbox"/> Spouse Meal Package	\$120.00	\$ _____
<input type="checkbox"/> Friday lunch for Young Woman Representatives only	\$ 20.00	\$ _____
<input type="checkbox"/> Friday lunch for Teens only	\$ 20.00	\$ _____
<input type="checkbox"/> Saturday banquet dinner only	\$ 35.00	\$ _____
<input type="checkbox"/> Spouse Saturday banquet dinner only	\$ 35.00	\$ _____

Total for Registration and Meals \$ _____

ENRICHMENT SESSIONS

- A. Debbie Larson, LWML National President
B. Eden Keefe, Visual Faith Ministry
C. Heidi Norton, Heart to Heart Sisters

My order choices for Enrichment Sessions are: 1 _____ 2 _____ 3 _____

SPECIAL NEEDS

☐ I need a signer ☐ I am willing to sign ☐ I need large print ☐ I need braille

☐ I need a ride to the worship service at Christ Lutheran
☐ I am willing to drive others to the worship service at Christ Lutheran and can take _____ passengers in my car

☐ I have dietary restrictions/considerations: _____

☐ I need wheelchair access

☐ I have other needs: _____



Make checks out to: LWML RMD; mail registration form along with your check to:
Joey Schilling, 5006 W. Hinsdale Circle, Littleton, CO 80128

District Officers Serving the Lord with gladness

Debbie Yocky

PRESIDENT

president@lwmlrmd.org

Brenda Sima

CHRISTIAN LIFE VP

christianlife@lwmlrmd.org

Tanya Hall

COMMUNICATIONS VP

communications@lwmlrmd.org

Beth Nagy

GOSPEL OUTREACH VP

missions@lwmlrmd.org

Shelley Stewart

SERVANT RESOURCES VP

resources@lwmlrmd.org

Margaret Blazek

RECORDING SECRETARY

Yvonne Steeby

TREASURER

treasurer@lwmlrmd.org

Rev. Timothy P. Davis

SENIOR PASTORAL COUNSELOR

Rev. Pete Scheele

JUNIOR PASTORAL COUNSELOR

Cindy Stahly

MEETING MANAGER

Sue Giddings

TIDINGS EDITOR

tidings@lwmlrmd.org

Anita Werner

PLANNER

Mary Marten

PARLIAMENTARIAN

Chris Bostron

CONVENTION COORDINATOR

events@lwmlrmd.org

Nancy Kraft

Linda Ballenthin

CONVENTION CO-CHAIRMAN

Joey Schilling

CONVENTION REGISTRAR

Susan Avila

ARCHIVIST-HISTORIAN

Christie Peebles

CHRISTIAN RESOURCES EDITOR

Beth Shroff

PUBLICATIONS MANAGER

Lori Schick

SOCIAL MEDIA ADMINISTRATOR

Shelley Stewart

PUBLIC RELATIONS DIRECTOR

Janet Krogh

PRAYERS

prayers@lwmlrmd.org

Linda Harsh

MISSION SERVANTS COMMITTEE

CHAIRMAN

Sue Frauenfeld

SCHOLARSHIP COMMITTEE

CHAIRMAN

Susan Weimer

STRUCTURE COMMITTEE CHAIRMAN

Lisa Weber

COMMITTEE ON YOUNG WOMEN

CHAIRMAN

Mary Redeker

TEEN COMMITTEE CHAIRMAN

Heidi Norton

HEART TO HEART SISTERS

COMMITTEE CHAIRMAN

Christie Peebles

NOMINATING COMMITTEE CHAIRMAN

Beth Weber

GIFTS OF LOVE ADVOCATE

JoAnn Beegles

FOUR CORNERS ZONE PRESIDENT

Janet Krogh

NORTH CENTRAL ZONE PRESIDENT

Joline Christensen

NORTHEASTERN ZONE PRESIDENT

Kay Moeller

NORTHERN ZONE PRESIDENT

Barbara Wertz

NORTHERN NM ZONE PRESIDENT

Christina Bean

PECOS ZONE PRESIDENT

Belinda Burmeister

RIO GRANDE ZONE PRESIDENT

Lori Williams

SOUTH CENTRAL ZONE PRESIDENT

Karen Mann

SOUTHERN ZONE PRESIDENT

Beth Gileece

WESTERN ZONE PRESIDENT