



Contents

President	2
Pastoral Counselor	2-3
Gospel Outreach	4
Servant Resources VP	5
Christian Resources Editor	5
Share the Word	6
Gifts of Love	6
Proposed Mission Grants	7
Candidates for District Offices	8-9
Candidates for Nominating Com .	10-11
Fall Rally Dates	12
Upcoming Events	12
Around the District	13
Gifts from the Heart	14
Contest Winners	15
Convention Menus	16

Connect with Us



www.lwmlrmd.org



hello@lwmlrmd.org



[Facebook.com/lwml.rmd](https://www.facebook.com/lwml.rmd)



[Instagram.com/lwmlrmd](https://www.instagram.com/lwmlrmd)

Unless otherwise indicated, all Scripture quotations are from The ESV® Bible (The Holy Bible, English Standard Version®), copyright © 2001 by Crossway, a publishing ministry of Good News Publishers. Used by permission. All rights reserved.

As we draw closer to the opening of our 51st LWML Rocky Mountain District Convention, please note the information contained in this issue of *Tidings*. Ingathering lists, Mission Grant Proposals, biographical snapshots of our candidates, the menus and more! Below you can find the all important Convention Checklist provided by the convention coordinators.

Convention Checklist and Travel Tips:

Prayers for God's blessings on this convention and those presenting and prayers for safe travel.

Those needing rides or willing to provide rides to the Opening Worship Service at Christ Lutheran Church be at the front doors to the hotel at 6:15 pm on Friday, June 3rd.

Your reservation and confirmation information.

Your Bible.

A sweater/jacket/cardigan for the convention assembly room tends to run cool.

Fun clothes and shoes for the Pre-Convention activity Movin' for Mites.

Ingathering items (see [page 14](#) for details)

Offering money for three (3) Convention offerings
2022-2024 Mite Offering
Lighthouse Mission
Tender Loving Care Community

Look for the Mite Boxes in the Convention General Assembly room and place your offerings there.

Bring your checkbook or cash to shop away at our LWML store.

Bring a cooler to store drinks/snacks as there are no refrigerators or microwaves in the rooms.

Your Camera, your kindness, and your prayers of thanksgiving as we gather IN PERSON at this convention and celebrate His Perfect Gifts from Above! **See you soon.**

Debbie Yocky
PRESIDENT

*Let the word
of Christ
dwell in you
richly*



*Colossians
3:15-17*

*Biennium
Theme Verse*

Pr Pete Scheele
SENIOR PASTORAL
COUNSELOR

Time continues to move at a rapid pace. Spring is finally here and the school year is drawing to a close. We will be gathering for convention in one month. It has been too long since we were able to gather together. I can't wait to see you. Come for the LWML hugs and laughter. Come to choose new mission grants and complete service projects. Come to reconnect with old friends or make new ones. Come to worship, learn, and sing together. Come to celebrate the past and help to shape the future of the LWML Rocky Mountain District. Just come.

I have been so blessed to serve as the LWML Rocky Mountain District President. The last four years have been full of joys and sorrows. I have enjoyed traveling throughout the district when able and connecting with so many of you. We have faced many challenges over the past two years but continue to serve the Lord

with gladness. I have relied on past presidents for their wisdom and encouragement. The Executive Committee and Events Planning Committee are so faithful in completing their tasks. Thanks to all of these faithful women and a special thanks to our Pastoral Counselors. It is a joy to serve with these faithful servants.

I was recently asked to provide a brief history of the LWML Rocky Mountain District for the past twenty years. It was difficult to condense our rich history into a few paragraphs. Hundreds of women have served on the Executive Committee and district boards. 134 grants have been funded for a total of \$803,724.00. But those numbers tell only a little of our story. The story will continue to unfold as we gather together for our 51st Convention. I hope to see you there.

Debbie

Using God's Perfect Gifts

When you talk about the months of May and June, you have to admit that God has certainly packed these two months with all sorts of gifts from above. Yes, we get those spring rains and snows (If you live at 9,000 ft like I do) that makes everything turn green and colorful. Still one of the greatest Perfect Gifts From Above during this time is the Holy Spirit. The end of May brings us to the Ascension of Jesus Christ to His Heavenly Father and then He sends down the Holy Spirit on Pentecost, which just happens to be

the Sunday of the convention, June 5th. What a perfect gift that was for the Disciples of Jesus as it says in Acts 2:1-5. *When the day of Pentecost arrived, they were all together in one place. And suddenly there came from heaven a sound like a mighty rushing wind, and it filled the entire house where they were sitting. And divided tongues as of fire appeared to them and rested on each one of them. And they were all filled with the Holy Spirit and began to speak in other tongues as the Spirit gave them utterance.*

Continued on page 3

Continued from page 2

Through the Perfect Gift from Above, the Holy Spirit changed all the disciples from meek and timid followers of Jesus, who were wondering what to do, to enthusiastic and energetic believers who could now talk in twelve different languages as the Holy Spirit gave them utterance to do.

Did you catch that? They were no longer wondering what to do, they were now proclaiming what had been done, that changed the whole world. That's right! The world lives in the state of sin, death, and the power of the devil. It did before Jesus came into the world and that's still true today. The difference that Jesus made is that He conquered sin, death and the power of the devil for us by His life, death on Good Friday, and His resurrection on Easter morning. What a Perfect Gift that was From Above!!!

But the Perfect Gift of our salvation does us no good, if we still live in the sin-filled, death-filled world, under the schemes of the devil. The Apostle Paul tells us in Romans 8:12-17. *Therefore, brothers and sisters, we have an obligation—but it is not to the flesh, to live according to it. For if you live according to the flesh, you will die; but if by the Spirit you put to death the misdeeds of the body, you will live. For those who are led by the Spirit of God are the children of God. The Spirit you received does not make you slaves, so that you live in fear again; rather, the Spirit you received brought about your adoption to sonship. And by Him we cry, “Abba, Father.” The Spirit Himself testifies with our spirit that we are God’s*

children. Now if we are children, then we are heirs—heirs of God and co-heirs with Christ, if indeed we share in His sufferings in order that we may also share in His glory.

Now that's a Perfect Gift From Above that you canNOT over use, but you sure can under use it. Look again at what the Perfect Gift From Above in the Holy Spirit gives you. 1) You are a child of God; 2) You are no longer a slave to sin, death and the devil; 3) You have the assurance that God, your Father is taking care of you, watching over you, providing for you as His child. Now as an heir of God and a co-heir with Christ, oh, there will still be suffering in the world but you now know where home is. Yes, your home is with Jesus Christ now and forever and that's a Perfect Gift From Above that will never be taken from you.

Here's the problem though, when you receive a gift, especially a Perfect Gift From Above you have some options. First, you have the option of not accepting it. I hope that never happens to you, though that has happened many times and God through the Holy Spirit keeps giving you that gift to use. Second, you have to learn how to use that gift to get the best from it. Third, you have to keep using it because the devil will be encouraging you to stop using all of God's Gifts From Above.

Oh, God's Perfect Gifts From Above are always coming into your life through the Holy Spirit working through God's Word and Sacrament, so say thanks and put them to good use. That's the whole reason why God wants you to have them. So let them go to work in you!!! Amen

Pr Pete Scheele
SENIOR PASTORAL
COUNSELOR



Beth Nagy
GOSPEL OUTREACH
VP



Mites

Remember to send
mites to our
treasurer:

Yvonne Steeby
LWML RMD Treasurer
PO Box 1657
Alamogordo, NM
88310

Since this is my final article as Vice President of Gospel Outreach, I want to thank you for the opportunity to serve you in this capacity for the past year. I have enjoyed working with the Mission Grants Committee and learning what the other committees under the Gospel Outreach are doing. It was inspiring to learn much more about

the work that our mission grants are supporting and to work on the grant selection process for the 2022 convention. We chose 17 of the grant requests to be placed on the ballot. Please find them on page 7 and discuss with the members of your groups and your delegates as you pray and decide which to select.

Kingdom Kids' Camp at
Lutheran Valley Retreat:
\$5,000 | Paid in Full

Concordia Theological
Seminary Food & Co-op
Financial Assistance:
\$8,000 | Paid in Full

God Cares About You –
"Children's Weekend Food
Bag Ministry":
\$8,000 | Paid in Full

Mercy Meals of Colorado
Springs:
\$5,000 | Paid in Full

Interns at Shepherd of the
Valley Lutheran Church,
Navajo, NM:
\$9,000 | Paid in Full

Support for University
Lutheran Chapel, Boulder,
CO:
\$8,000 | Paid in Full

Introducing Muslims to the
Savior — Lutheran Heritage
Foundation:
\$5,000 | Paid in Full

Filling Haitian Tummies
Opens Ears to the Gospel —
Trinity HOPE:
\$5,000 | Paid in Full

Bringing Christ's Light to
Those Living in Darkness —
Lutheran Braille Workers:
\$8,000 | Paid in Full

The Table at Bethlehem
Lakewood, CO:
\$5,000 | Paid in Full

Reaching the Hispanic
Community of Commerce
City, CO:
\$7,996 | Paid in Full

LWML Global Bible Studies
by Donna Pyle:
\$3,964.28 | Paid in Full

\$77,960.28 | \$77,960.28
100% Paid

*Bethesda grant removed ...

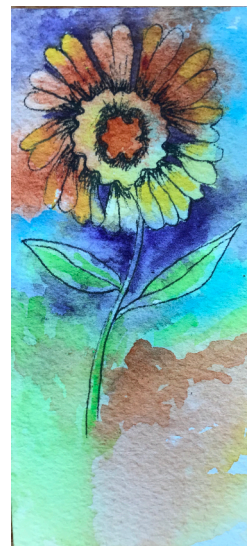


Changes

As the school year winds down, things get busier. Final tests, graduation, and planning for the next phase. It is all very overwhelming. It seems everything is changing and moving so fast. But Jesus never changes. "Jesus Christ is the same yesterday, and today and forever." (Hebrews 13:8) This brings us comfort in the fast pace of life.

The other comfort we have as Lutheran Women is celebrating and rejoicing in our Savior with our LWML sisters. This summer we celebrate 80 years of the LWML as an organization. Join us in this celebration in Albuquerque! Through our celebrations we will rejoice together as we look forward to many more years of the LWML!

Shelley Stewart
SERVANT RESOURCES
VP



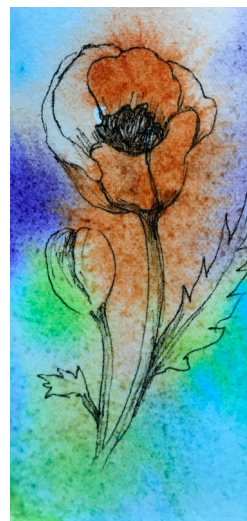
Finding a Family

Ever since heading off to college, I have always been far away from home and family. For a time, I could jump in the car for a weekend at home whenever I wanted, but now the distance is too great for a spontaneous trip home. In every place I lived, Lubbock, Houston, Hamilton MT, Boston, and now Fort Collins/Severance CO, I have been fortunate enough to be surrounded by a different kind of family that made each place feel like home too. I have been blessed by a church family in each place I have lived no matter how short or long the stay has been. People who invited me for lunch, mentor me, helped me look at homes to buy, and have loved and encouraged me well throughout life's ups and downs. I know that Christ has used my church family as his hands and feet to love me well.

These relationships have been especially meaningful to me as a single woman who at times can feel so alone. I am strengthened and encouraged by the family connections we share in Christ. How have you been blessed by your church family?

If you are like me, it is easy to get into a routine at church and forget to talk to new people. I want to encourage you to slow down and look around church on Sunday. Who is God calling you to build deeper relationships with or just talk to? Who can you invite to sit with you at church, to lunch, to a hike, to a movie, etc.? Sometimes when we least expect it, God uses us to encourage one another. Christ has risen! He is risen, indeed! Alleluia.

Christie Peebles
CHRISTIAN
RESOURCES EDITOR



Beth Weber

GIFTS OF LOVE
ADVOCATE



Randy was somewhat of a hypochondriac throughout his life. His fear of catching a disease or getting cancer caused him to become a recluse in his house. He gave up gathering with family, attending Church, or even taking a walk in the park. All these things seemed like they posed danger to him. The sad thing is that for decades, he was forfeiting living of life, trying to preserve life, only to find that he had become the biggest loser.

As Christians we don't live in such paralysis of fear, even though certain areas of our lives may reflect it still. Avoiding the planning of our estate because we are afraid that if we talk about the end of our lives that talk will make it a reality, is choosing to live in fear rather than faith. On the one hand it is true that end of life planning does acknowledge there is an end coming, but it's not really end of life.

It's just the end of current circumstances, for life lasts forever in Jesus, who conquered death by rising from the dead.

With that confidence we choose to use the legal tools of wills and trusts, constructed by our attorneys, to guide our affairs. But this process is more than just a legal transaction. It is an act of love, providing for family care. It is an act of love providing support for ministry so that countless more will hear the Gospel and come to faith in Jesus. Live in that faith and love. Express it in your plans. Your LWML Gift Planning Counselor Carol von Soosten can help you. Contact her by Email: Carol.vonSoosten@lfnd.org, or by phone at: 800-741-4138, or by visiting the web site--lwmlgiftplan.org. Or you can contact our RMD GOL Advocate Elizabeth Weber at weber4342@acsol.net, Cell: 970-361-0794

Nancy Kraft

CONVENTION CO-
CHAIRMAN



Share the Word

What are you doing with the many devotional and Bible study books you have read? Are they collecting dust? Why not share them! Bring them to the convention where we will have a table available. You can donate them and exchange them for something you might want to take home. FREE! Don't have a book...you can still take a book. Did I say Free....Yes!! Visit us in the Exhibit Hall. *Left over books will be donated.

Proposed Mission Grants for 2022-2024



Support for the University Lutheran Chapel, Boulder	\$5,000
Kruse Memorial Chapel Transformation at the Dakota Boys and Girls Ranch	\$4,000
Feeding Haitian Children Spiritually and Physically	\$5,000
Colorado Mesa University: Outreach Grand Junction, CO	\$6,000
Financial Assistance for Concordia Theological Seminary Fort Wayne Food & Clothing Coop	\$5,000
Indonesian Hymnal Project	\$5,000
God Cares About You, Albuquerque, NM	\$6,000
OT Translation in the Bandi Language of Liberia	\$8,000
Lutheran Hispanic Missionary Institute Instruction Infrastructure Investment, El Paso, TX	\$6,000
Worker Wellness for Chaplain Families: LCMS Ministry to the Armed Forces	\$3,000
Bringing Spanish Braille Bibles to Central & South America	\$8,000
Fostering Faith in the Forest at LVR, Woodland Park, CO	\$5,000
Shelter from the Storm—Equipping Construction & Repair Teams, MOST Ministries	\$6,000
Escaping Atheist Communism—Lutheran Books for the former Soviet Union	\$5,000
Cross Cultural Outreach Ministry Training to the Churches of RMD	\$5,000
Matongo Seminary Chapel, Lutheran Church in Kenya	\$5,000
Dominican Republic Disability Ministry	\$5,000

Delegates from around the Rocky Mountain District will have an opportunity to vote on and choose the grants that the LWML RMD will fund in the next biennium. The members of the Mission Grants Committee will present these on Friday, June 3rd at the convention. There will also be further information contained in your convention manual. Some of these may be familiar from mission grants funded in the past. Ministries to those in the Rocky Mountain District as well as to people in the United States, Haiti, Kenya, the former Soviet Union, Central and South America, Liberia, the Dominican Republic, and Indonesia have requested consideration for mission grants. As Gospel Outreach VP, Beth Nagy, suggested in her article, consider these prayerfully, share them in your groups, and send your delegates to the convention with your preferences.



Candidates for LWML Offices

Shelley Stewart Candidate for President



Shelley Stewart is an active member of the South Central Zone. She attends Mt. Olive Lutheran Church where Robert Harmon is pastor.

Shelley has lots of experience in various offices of the LWML RMD. Currently Shelley is serving at the District level of LWML as Vice President of Servant Resources where she oversees the YWR, Teen, and Leadership Development committees. She also likes to write *Tidings* articles that show how the Gospel relates to her personally. Shelley has served in many positions in her zone as well as her church where she is the office manager.

Duanne Meisner Candidate for Junior Pastoral Counselor



Duanne Meisner is the pastor of Resurrection in the City Lutheran Church in Denver, Colorado.

He writes, “I absolutely love being the pastor of this congregation. We’re a beautiful, diverse, loving family—not just in our heads but revealed in the way we show love and treat one another!” Now living in the North Central Zone, Pastor Meisner has experience advising LWML in the Missouri District and has also served as a Church Planting Missionary to Belize. He lists being a pastor as his most outstanding gift.

Andi Noblitt Candidate for Vice President of Gospel Outreach

Andi Noblitt is from Brighton, Colorado in the North Central Zone. She attends Mt. Zion Lutheran Church (Pastor Jared K. Melius) where she served on the Architectural Committee, utilizing her expertise of Associate Director of Engineering. Andi has served the LWML RMD as Mt. Zion's president and treasurer as well as being involved with the district YWR and Scholarship Committees.



Christina Bean Candidate for Vice President of Servant Resources

As a member of Immanuel Lutheran Church in Clovis, NM, Christina Bean has actively served the LWML, her church, and community.

In the LWML, Christina has worn many hats, including vice president of her local group, President of the Pecos Zone, YWR, a district YWR committee member and a member of the National LWML Group and Leadership Development Committee. At her church she joins Pastor Thomas Reeder Jr on the Board of Evangelism. Christina has a special gift and talent in her community as a veterinarian.





Candidates for Nominating Committee

As a member of Immanuel Lutheran Church in Clovis, NM, Sylvia Bean has served LWML in her local group, the Pecos Zone, the Rocky Mountain District, and the National LWML. Sylvia was serving as LWML RMD President and co-hosted the 2017 LWML Convention held in Albuquerque. In her church Sylvia has been active with Sunday school and VBS as well as assisting Pastor Thomas Reeder with the Board of Evangelism, and the Board of Christian Education. Serving on many community boards and organizations, Sylvia also is a Preschool Director.



Sylvia Bean



Jo Ann Beegles

Jo Ann Beegles is a member of St. Paul's Lutheran Church in Durango, Colorado where Pastor Ben Delin supports the LWML in their mission goals. Jo Ann's experience with LWML has included holding the offices of president and vice-president in her society. She is currently the Four Corners Zone President but has also held other offices in the zone. At her church, Jo Ann is active in the bell and vocal choirs, is a substitute organist, and works with the Sunday school. In the community Jo Ann worked in customer service and as an administrative assistant. She uses her musical gifts as a piano teacher and is a member of a local Celtic Band.

Sue Frauenfeld, member of Mt. Zion Lutheran Church in Denver, Colorado, is an educator. Sue has served the LWML in many local and North Central Zone capacities including president, treasurer, secretary, and nominating committee. On the district level, Sue has been a convention co-chair, planner, scholarship committee chair, and on the nominating committee. At her church along with Pastor Jared K. Melius, Sue uses her gifts as an educator by teaching Sunday School, directing the Food Pantry, and being involved in Christian education.



Sue Frauenfeld

Karen Mann lives in Colorado Springs, Colorado and attends Resurrection Lutheran Church where Rev. Dennis Lucero is the pastor. She is president of her local group and in the Southern Zone has served as president, Christian life president, and secretary. At church, Karen is very active in Christian Education, is a member of the choir, and was treasurer for their Christian Women's Fellowship Retreat. Karen also has volunteered with Orphan Grain Train Mercy Meals, led a music program for Alzheimer patients, and was a member of the St. Louis Community Chorus.



Karen Mann



Carol Mathews

As a member of Wheat Ridge Lutheran Church (Pastor Eli Lietzau) in Wheat Ridge, Colorado, Carol Mathews serves in her church, local LWML, and the North Central Zone. At the Zone level, Carol has been vice president and District Youth Chairman. In her local group, she has taken on the roles of vice president, historian, and funeral chairman. Carol has done a lot of work in her community of Wheat Ridge including neighborhood revitalization and volunteering on the cultural commission. Carol is a retired retail manager.

Barbara is from Albuquerque, New Mexico and attends Christ Lutheran Church where Eric Robinson serves as pastor. Being a part of LWML is important to Barbara as can be seen from her local, zone, district and national involvement. She has held the positions of president, vice president, secretary, treasurer, and YWR. Barbara has been a member of several committees at the district level and also the convention worship committee for National LWML. At church Barbara has taught VBS, Sunday school, and at the elementary school. She is also a home school teacher.



Barbara Wertz

Fall Rally Schedule

Pecos Zone	Immanuel, Clovis, NM	August 20, 2022
Western Zone	Grace Fellowship Gypsum, CO	September 10, 2022
Northeastern Zone	St. Paul's, Julesburg, CO	September 17, 2022
Rio Grande Zone	Mission, Las Cruces, NM	September 17, 2022
Four Corners Zone	Trinity, Cortez, CO	September 24, 2022
South Central Zone	Mt. Olive, Aurora, CO	September 24, 2022
Southern Zone	Rock of Ages, Colorado Springs	October 1, 2022
Northern Zone	Mt. Hope, Boulder, CO	October 8, 2022
North Central Zone	Gethsamane, Northglenn, CO	October 15, 2022
Northern NM Zone	Calvary, Rio Rancho, NM	October 22, 2022

Upcoming Events

May 20	Last day to sign up for the meal plan.
June 1	Last day for refunds
June 3-5	51 st LWML Rocky Mountain District Convention
August 20	Fall Zone Rallies begin
October 22	Final Fall Rally held
October 19-22	Assembly of Leaders, St Louis, Missouri
June 22-25, 2023	National Convention in Milwaukee, WI
June 26-29, 2025	National Convention in Omaha, NE

Service Opportunities

Have you ever considered serving on a district committee? New committees will be appointed right after the June Convention. Committees include Scholarship, Structure (bylaws), Christian Life, Leader Development, Committee on Young Women, Heart to Heart Sisters, and Teen.

Committees need your new ideas and willingness to serve the LWML RMD.



Women of the Cross Hosts LWML Prayer Service

Women of the Cross LWML in Highlands Ranch, CO is a part of our Holy Cross Lutheran Church's family.

Women of the Cross hosted this year's Prayer Service Saturday, February 26, 2022. Women of the Cross' four readers, pictured below, were Kathy Harrington, Kelsey Covert, Helen Tabris with Deanna Otto at the lectern. Our Pastor Skelton was the host pastor. South Central Zone President, Lori Williams, Rocky Mountain District Junior Pastoral Counselor, Rev. Pete Scheele; South Central Zone Treasurer, Angie Otto, and Secretary Shelley Stewart were present.

Attending also were several from other churches in the South Central Zone.

We enjoyed breakfast deliciousness (did have to deal with one rowdy table) during the "Welcome" by Marie McQuarrie, President, of Women of the Cross. The three youngest women (YWR age) were asked to stand and introduce themselves. As at all LWML events we are hopeful those attending will leave with having found a new friend or two. Zone President Lori Williams gave zone updates. After the service there were LWML hugs.



Linda Harsh

Mission Servants
Committee



Perfect Gifts From the Heart

Our Gifts from the Heart ingathering will be blessing one outreach in each of three zones hosting the convention. The Mission Servants Committee along with the YWRs and Teen Reps are looking forward to receiving your Perfect Gifts. Your spring events will be the perfect time to organize with those driving to Albuquerque. Here's a quick recap of the items requested by each ministry:

God Cares About You — shares Christ's love to the disadvantaged in ABQ's "international" zone

- Children's Bible Story Books, English or Spanish, new or used in good condition
- Hygiene Kits, hand towel, wash cloth, bar of soap and small packet of tissue in a large ziplock bag

Hartley House — provides support and provisions to battered women

- New Underwear, all sizes and in original packaging
- Feminine Hygiene Products, in original box or packaging

Ysleta Lutheran Mission Human Care — proclaims the Gospel on both sides of the border

- Blankets, all sizes, new or gently used
- Toys, for ages 1 through 12 (smaller and compact toys are best due to our shipping constraints)

Please coordinate within your zone the transport of your Gifts from the Heart donations to Albuquerque. Happy collecting!

Chris Bostron

CONVENTION
COORDINATOR



And....The Winner Is

Thank you for your participation in the Name the LWML Store contest and in naming the Exhibit Hall.

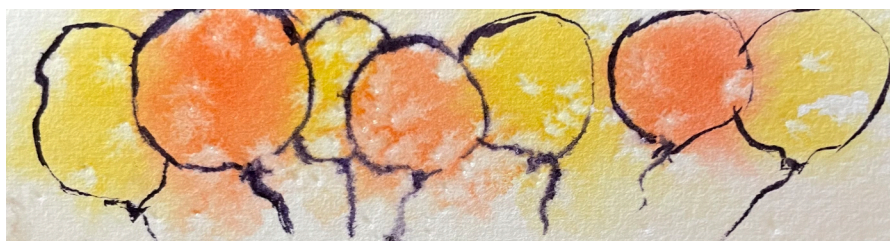
And the winner of the store naming contest is....**FIESTA FAIR**, submitted by convention co-chairman, Linda Ballenthin. Congrats, Linda!

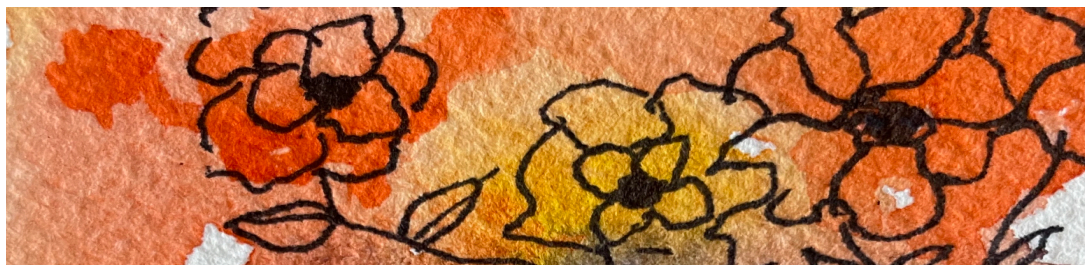
Also, here is the winning name for the Exhibit Hall: **UP, UP and AWAY**

submitted by Lisa Weber, chairman of the Committee on Young Women. Congrats to her, as well.

Each winner will receive a \$25 Gift Certificate to spend at the LWML Store during Convention.

I am looking forward to Convention and an exciting time together for FUN, FAITH AND FELLOWSHIP! That will be a real Fiesta!.





Chris Bostron

CONVENTION
COORDINATOR



Food with a Flair

What's better than a good meal? A great meal shared in fellowship with your Brothers and Sisters in Christ! Here's what's on the menu for you at the District Convention in Albuquerque:

Friday, June 3rd Dinner

Herb Frenched Chicken Breast with Mashed Sweet Potato, Broccoli, Meyer Lemon Broth, Mixed Baby Field Green Salad with assorted dressings, Dinner Rolls with butter, and Chocolate Cake
Iced Tea, water and coffee

Saturday, June 4th and Sunday, June 5th Continental Breakfast

Scrambled Eggs, a few boiled eggs, bacon or sausage and potatoes, too.
Freshly baked Danish, croissants, bagels, assorted muffins served with butter, preserves, peanut butter and cream cheese
Orange juice, freshly brewed coffee, decaffeinated coffee and teas

Saturday, June 4th Lunch South of the Border

Ground beef tacos, shredded Monterey and Cheddar cheeses, guacamole, sour cream, onions, jalapeno peppers, house made Pico de Gallo, shredded lettuce, cheese enchiladas with red or green chile, chicken enchiladas with red or green chile, Mexica rice with peas and corn, black beans with cilantro and cumin, and Bizcochitos for dessert
Freshly brewed coffee, decaffeinated coffee and teas, iced tea

Saturday, June 4th Banquet

Grilled Flat Iron Steak(4 oz) Chimichurri (Traditional Parsley, Vinegar, and Oil)with Grilled Shrimp, fresh asparagus and Yukon Gold mashed potatoes, mixed baby field green salad with assorted dressings and dinner rolls with butter.
Mousse for Dessert
Iced Tea, water and coffee

There's still time to register and sign up for the meal package. The hotel needs our meal counts by May 23, please be sure to register/sign up for your meal plan by May 20. Thank you. You can request a Registration Form by emailing events@lwmlrmd.org or visit the Convention information on the District website at lwmlrmd.org/convention/. See you in Albuquerque!

District Officers Serving the Lord with gladness

Debbie Yocky

PRESIDENT

president@lwmlrmd.org

Brenda Sima

CHRISTIAN LIFE VP

christianlife@lwmlrmd.org

Tanya Hall

COMMUNICATIONS VP

communications@lwmlrmd.org

Beth Nagy

GOSPEL OUTREACH VP

missions@lwmlrmd.org

Shelley Stewart

SERVANT RESOURCES VP

resources@lwmlrmd.org

Margaret Blazek

RECORDING SECRETARY

Yvonne Steeby

TREASURER

treasurer@lwmlrmd.org

Rev. Timothy P. Davis

SENIOR PASTORAL COUNSELOR

Rev. Pete Scheele

JUNIOR PASTORAL COUNSELOR

Cindy Stahly

MEETING MANAGER

Sue Giddings

TIDINGS EDITOR

tidings@lwmlrmd.org

Anita Werner

PLANNER

planner@lwmlrmd.org

Mary Marten

PARLIAMENTARIAN

Chris Bostron

CONVENTION COORDINATOR

events@lwmlrmd.org

Nancy Kraft

Linda Ballenthin

CONVENTION CO-CHAIRMAN

Joey Schilling

CONVENTION REGISTRAR

convregistrar@lwmlrmd.org

Susan Avila

ARCHIVIST-HISTORIAN

Christie Peebles

CHRISTIAN RESOURCES EDITOR

Beth Shroff

PUBLICATIONS MANAGER

Lori Schick

SOCIAL MEDIA ADMINISTRATOR

Shelley Stewart

PUBLIC RELATIONS DIRECTOR

Janet Krogh

PRAYERS

prayers@lwmlrmd.org

Linda Harsh

MISSION SERVANTS COMMITTEE
CHAIRMAN

Sue Frauenfeld

SCHOLARSHIP COMMITTEE
CHAIRMAN

Susan Weimer

STRUCTURE COMMITTEE CHAIRMAN

Lisa Weber

COMMITTEE ON YOUNG WOMEN
CHAIRMAN

Mary Redeker

TEEN COMMITTEE CHAIRMAN

Heidi Norton

HEART TO HEART SISTERS

COMMITTEE CHAIRMAN

Christie Peebles

NOMINATING COMMITTEE CHAIRMAN

Beth Weber

GIFTS OF LOVE ADVOCATE

JoAnn Beegles

FOUR CORNERS ZONE PRESIDENT

Janet Krogh

NORTH CENTRAL ZONE PRESIDENT

Joline Christensen

NORTHEASTERN ZONE PRESIDENT

Kay Moeller

NORTHERN ZONE PRESIDENT

Barbara Wertz

NORTHERN NM ZONE PRESIDENT

Christina Bean

PECOS ZONE PRESIDENT

Belinda Burmeister

RIO GRANDE ZONE PRESIDENT

Lori Williams

SOUTH CENTRAL ZONE PRESIDENT

Karen Mann

SOUTHERN ZONE PRESIDENT

Beth Gileece

WESTERN ZONE PRESIDENT