



# Contents

President.....2  
Pastoral Counselor.....3  
Gospel Outreach VP..... 4  
Servant Resources VP.....5  
Christian Life VP.....5  
Gifts From the Heart.....6  
Printable Poster .....7  
Nominations Needed.....8  
Fall Rally Schedule.....9  
A Happening  
in the District.....10  
Gifts of Love ..... 11  
Service Opportunities..... 11  
Contacts..... 12

## GRACE

The LWML RMD has certainly been blessed by God. Blessings equate to grace as undeserved favor from God. God has blessed us with a willing and tireless leadership. He has blessed our Mite collections for our mission grants. We are blessed by those among us who teach, sew quilts, lead Bible studies, sing, play music, offer prayers, and collect items for our ingatherings and service projects, among other things.

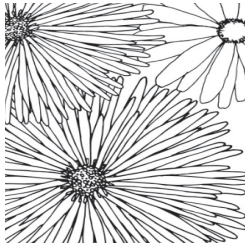
In our issue please note that we are in need of nominations for the new biennium, as well as volunteers to round out our committee membership. Linda Harsh has provided a list and poster detailing the items we will be collecting for charities at our 2024 Convention in Greeley (page 6-7). Andi Noblitt is also requesting that individuals and groups suggest mission grants for the 2024-2026 biennium (page 4).

There is a lot of activity boiling in the district. Check out the dates for Fall Zone Rallies. Also, many ladies will soon be bound for the District Retreat in Glorieta, NM. Donna Snow will lead our study.

Finally, go to [www.lwml.org](http://www.lwml.org) for Women in Mission Sunday information and the order of service. You can also order free bookmarks with the new mission grants listed to pass out in your congregation.

Unless otherwise indicated, all Scripture quotations are from The ESV® Bible (The Holy Bible, English Standard Version®), copyright ©2001 by Crossway, a publishing ministry of Good News Publishers. Used by permission. All rights reserved.





Shelley Stewart  
PRESIDENT

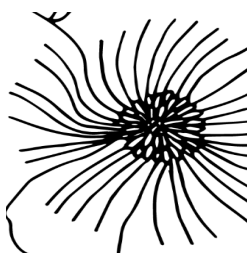
## REGIFTING HIS GRACE

The simple explanation of "grace" is something that is given even when it isn't deserved. Jesus died for everyone's sins, not just mine and yours, but even those of the folks that don't believe in Him. That doesn't seem fair, right? Well, that is grace. Good manners dictate that we should say "thank you" when someone gives us a gift. But is it okay to give the gift away? Most of us wouldn't admit to "regifting" but that is exactly what Jesus asks us to do when he gives us His grace. He wants us to recognize that we didn't deserve it, then to pass it along to other folks that don't deserve it either. So, is the point just to make us feel unworthy? Well, if we could make it on our own, under our own power and gumption, then we wouldn't need a Savior. Jesus is

showing us that we need Him and what he gives. And He wants us to pass that along too. *Let us then approach God's throne of grace with confidence, so that we may receive mercy and find grace to help us in our time of need. Hebrews 4:16, NIV*

**We tell our children that GRACE stands for "God's Redemption At Christ's Expense". Jesus picked up the bill. He covered our expenses. This is amazing mostly because we didn't deserve it. Paul points out in Romans 5 that "while we were still sinners, Christ died for us."**

So, now He asks us to love Him back. That's it. We still don't deserve grace, but He still gives it. So pass it on.



JANET KROGH  
COMMUNICATION  
COMMITTEE

## In Christ's Service

### PRAYERS

Did you know that the LWML RMD has a dedicated group of prayer warriors that addresses your requests for prayers?

If you have someone you would like us to pray for, please be sure to contact Janet Krogh, [janet\\_krogh@yahoo.com](mailto:janet_krogh@yahoo.com). Janet is part of our district communications committee who will compose a prayer and send it to the

*Tidings* editor to share with the prayer team.

If you are interested in helping with this outreach and joining our prayer warriors, please contact VP of Communications, Lesley Nordmeyer, and she will add your name to those who we contact when prayers are requested.

# GRACE



Pastor Duane  
Meissner

JUNIOR  
PASTORAL  
COUNSELOR

"Grace." Few words are more important to us as Lutherans. After all, it's the first of the solas in our great, theological banner, that we are saved "by *grace* alone, through faith alone, on account of Christ alone." But what is "grace?" Certainly the important truth that we receive heavenly gifts from God that we do not deserve comes to mind: gifts like the forgiveness of sins, life, and salvation. Far be it from any of us to forget or downplay this specific aspect of God's grace! But is there more to "grace" than that? Absolutely! We need only take a step back and broaden our view.

Both the Greek and Hebrew words that we typically end up translating as "grace" have, at their core, a sense of extending oneself in a way that is outward focused. It's easy to show that this sense is retained in the way we use the English word today. It is why when we offer up a prayer before eating a meal we can call that "saying grace." Despite having hungry tummies, we have trained ourselves to stop what we are doing, close our eyes so that we are not distracted by the plate of delicious food sitting in front of us, direct our minds and spirits heavenward, and offer up our words of thanksgiving to the God who provided us with the meal. We are "gracious" toward God in response to His being "gracious" toward us.

How else do we use the word? Well, someone might say that we are

"gracing" them with our presence. We might marvel over a professional ballerina who is dancing "gracefully." We might be relieved to find out that there is a "grace" period when returning an overdue library book. Or, we might tell a thoughtful friend who brought over a bowl of soup to us when we were sick that they were being "gracious." In each of these instances there is a receiver and, more importantly, a giver who is not operating for themselves, but is rather outwardly focused in their actions.

When we consider grace this broadly, how much richer our concept of God's grace toward us becomes! We need only consider the myriad ways that God has given of Himself, not selfishly, but with His beloved creatures in His mind. God graced mankind with His presence in a special way when, in the person of His Son, He took on human flesh and dwelt among us. He is gracious to listen to our prayers. He is gracious to us as He provides us with our daily bread. Indeed, every moment of our lives of faith is thoroughly bathed in God's grace, as He works all things, according to His promise, for our good! It's no wonder the Evangelist John was Spirit-led to proclaim to us that "from [Jesus'] fullness we have all received, *grace* upon *grace*." (John 1:16). You, dear reader, can rejoice in being a recipient of God's many graces, and also in knowing that, as He gives of Himself, His mind is on you.



Andi Noblitt

## GOSPEL OUTREACH VP

REMEMBER TO  
SEND MITES TO:

YVONNE STEEBY  
LWML RMD  
TREASURER  
PO BOX 1657  
ALAMOGORDO,  
NM 88310

# MISSION GRANTS MITE PROGRESS

	Granted	Paid
Fostering Faith in the Forest at Lutheran Valley Retreat	\$ 5,000	\$ 5,000
Financial Assistance for CTSFW Food & Clothing Coop	\$ 5,000	\$ 5,000
God Cares About You: Summer Intern Ministry	\$ 6,000	\$ 6,000
Trinity HOPE: Feeding Haitian Children Spiritually & Physically	\$ 5,000	\$ 5,000
Support for the University Lutheran Chapel, Boulder	\$ 5,000	\$ 2,500
LHF: Providing Lutheran Books to the former Soviet Union	\$ 5,000	\$ 2,500
Worker Wellness for LCMS Chaplain Families	\$ 3,000	\$ 3,000
Colorado Mesa University: Outreach	\$ 6,000	\$ 3,000
LBT: Old Testament Translation in the Bandi Language of Liberia	\$ 8,000	\$ 4,000
Lutheran Hispanic Missionary Institute Infrastructure Investment	\$ 6,000	\$ 2,000
Dakota Boys & Girls Ranch: Kruse Memorial Chapel Transformation	\$ 4,000	\$ 2,000
LBW: Bringing Spanish Braille Bibles to Central & South America	\$ 8,000	\$ 2,000
Equipping MOST Ministries Construction & Repair Teams	\$ 6,000	\$ 3,000
POBLO: Cross-Cultural Outreach Ministry Training to RMD Churches	\$ 5,000	\$ 2,500
Dominican Republic Disability Ministry	\$ 3,000	\$ 3,000
<b>TOTAL</b>	<b>\$ 80,000</b>	<b>\$ 52,500</b>

## MISSION GRANT UPDATE

*For by grace you have been saved through faith. And this is not your own doing; it is the gift of God, not the result of works, so that no one may boast. For we are His workmanship, created in Christ Jesus for good works, which God prepared beforehand, that we should walk in them. Ephesians 2:8-9*

Grace is a perfect loving gift from God. I am awestruck when I think about God's love, and I get excited about sharing the news of His grace with others. Our Rocky Mountain District LWML shares the Word through its mission grants. I am so happy to announce that we are accepting applications for grants for the 2024-2026 biennium. All information and applications can be found at the 2024 Mission Grants and YWR page of the LWML RMD website.

[\(https://www.lwml.org/2024-mission-grants-ywr/\)](https://www.lwml.org/2024-mission-grants-ywr/)

Any LWML member can submit an application for an approved LCMS charity, so I encourage all ladies to submit applications. The deadline to submit them is November 15, 2023. If you need more information, you can email the VP of Gospel Outreach at [missions@lwmlrmd.org](mailto:missions@lwmlrmd.org).

# LIGHTEN YOUR BURDEN

How do you find grace in leadership?  
As Christians we typically refer to grace by the definition of "courteous goodwill" or "undeserved favor". When we think of grace, we think of the grace of God. But how can we communicate grace in leadership? Grace in leadership comes first from the grace of God and accepting His grace even when we are feeling like we do not deserve it.

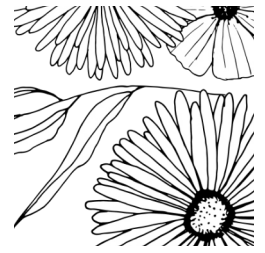
*"The Lord is merciful and gracious, slow to anger and abounding in steadfast love. (Psalm 103:8 )*

This undeserved favor can then be communicated to others through our actions and we can show grace to those serving with us. Has anyone else ever had a really bad day? I know every one of us has been through the trial of a bad day, or week, or longer.

Sin is in the world and therefore it impacts our lives. Grace is a tool to help make your fellow sister in Christ's journey easier.

*"Let your speech always be gracious, seasoned with salt, so that you may know how you ought to answer each person. (Colossians 4:6 )*

That courteous goodwill or undeserved favor can sometimes take a bad day and keep it from becoming a bad week. When you are in a situation where you can show grace to your fellow servants, please do so. If you can speak to someone kindly instead of harshly, showing grace will often yield a better result in the long run. If we all treat each other with grace and accept the grace of God, our burdens will be much lighter.



Christina Bean

**SERVANT  
RESOURCES VP**

## GRACE

How unfathomable is the grace God gives us!

How can I put into words HIS grace?

...the rainbow after the storm

...abundance of a garden harvest

...the blooming of flowers

...sparkling of stars

...the hug of a child

...a friend calling at just the right time

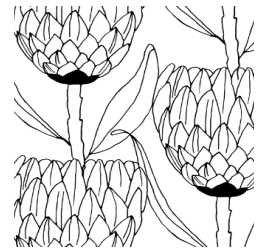
...a song on the radio, a sermon at the right time

...calm in the midst of a storm

...peace that surpasses understanding,

...being called His child

...His daughter



Christie Peebles

**CHRISTIAN LIFE  
VP**

My prayer is that in this season of life, you will see yourself as God sees you...

His precious child who He created and formed,

who He cherishes and loves,

who He died for, forgives, and redeemed,

who He pursues and rescues!

## GRACE





Linda Harsh

MISSION  
SERVANTS  
COMMITTEE  
CHAIRMAN

## GIFTS FROM THE HEART

It's time to watch the sales for our 2024 Gifts from the Heart Ingathering projects, especially for specific school supplies needed to assemble Teacher Kits. But wait, I'm getting a little ahead of myself. We plan to bless two outreaches, one from each of our host zones, as the recipients of our 2024 LWML RMD Convention Gifts of the Heart Ingathering. Whether you wish to travel light to convention or are looking for a group or zone project, there's something for you!

**Orphan Grain Train in the Northeastern Zone** sends relief for human need worldwide. We will be collecting **New Underwear & Socks for Men, Women, and Children** and assembling **Teacher Kits**.

### Teacher Kit List and Instructions:

1 - Drawstring or tote bag, new or gently used (no religious, camo, patriotic or military symbols)

1 - 12-Pack pencils, 1 - Pencil sharpener, 4 - Highlighters, 2 - Red pens

1 - 12-Pack Chalk (white or colored) & 1 Chalkboard eraser

1 - Clipboard, 1 - Adult scissors, 4 - Pocket folders, 1 - Ruler

4 - Sheets of stickers (stars or smiley faces)

Please no additions, deletions, or substitutions. Find complete instructions at [www.ogt.org](http://www.ogt.org).

**Life Choices in the Northern Zone** advocates for women in pregnancy crisis situations with love and compassion. They serve clients in the Loveland and Longmont area. We will be collecting **Gift Cards from stores like Walmart and King Soopers for \$10, \$15, and \$20** and putting together **Baby Bags** (given to moms to bring baby home from the hospital).

### Baby Bags:

**Option 1:** Items can be boy, girl, or neutral since some moms wait to find out.

1 - Receiving blanket

3 - Burp rags

1 - Hat & a pair of booties

2 - Onesies, Newborn

2 - Sleepers, Newborn

Wrap items in the receiving blanket and tie it with a ribbon or cord.

### Option 2: Add the following 3 items and pack all items in the diaper-backpack

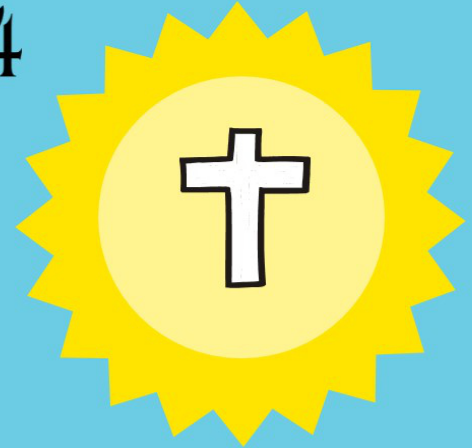
1 - Small package of wipes & 10 - Newborn diapers

1 - Diaper- Backpack, see the link below for an example:

<https://www.walmart.com/ip/Diaper-Bag-Backpack-Multifunction-Backpack-With-Changing-Station-USB-Charging-Port-Foldable-Crib-Large-Capacity-Travel-w-Sunshade-Pacifier-Case-Strol/1788449188?athbdg=L1600>

The diaper-backpacks are a little pricey; consider applying for a Thrivent Action Card to purchase them.

# RMD Convention 2024 Gifts from the Heart Ingathering



## Life Choices

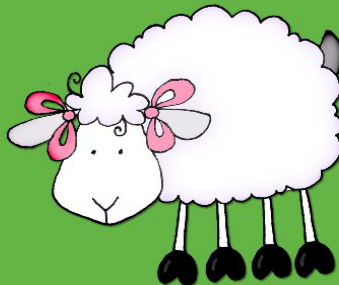
~Gift Cards \$10 - \$20

~Baby Bags

## Orphan Grain Train

~New Socks & Underwear

~Teacher Kits



*In His  
Hands*

Job 12:7-10



Sue Frauenfeld

**NOMINATING  
COMMITTEE  
CHAIRMAN**

## NOMINATIONS NEEDED

Do you know people with a heart for and commitment to LWML? Maybe this is YOU! The Nominating Committee is seeking nominations for the following offices: Vice President of Christian Life, Vice President of Communications, Recording Secretary, Treasurer, Jr. Pastoral Counselor and Nominating Committee (5 members). Elections will take place at the LWML Rocky Mountain District Convention, June 6-9, 2024. Suggestions for nominations may be submitted by individuals or societies. Please contact the Nominating Committee Chairman, Sue Frauenfeld at cell phone 720-364-6187, email [nomcom@lwml.org](mailto:nomcom@lwml.org), or mail at 8320 Ralph Lane, Denver, CO 80221. The committee will contact them, secure nominations, and have them complete the nomination form. You can also speak to any member of our nominating committee including Sylvia Bean, Jo Beegles, and Karen Mann.

### **General Statement of Duties**

**Vice President of Christian Life** (4 year term) shall be coordinator of the Christian Life Department including the chairman of the Christian Life Committee, Christian Resources Editor, and LWML store manager.

**Vice President of Communications** (4 year term) shall provide leadership and direction to the *Tidings* editor and publications manager as well as coordinate the convention publicity and be alert to district and zone news.

**Recording Secretary** (4 year term) records convention proceedings and meetings of the Board of Directors and the Executive Committee, providing members and past presidents with minutes in a timely manner.

**Treasurer** (4 year term) receives all monies and keeps an itemized record of all receipts and disbursements. Also makes authorized payments and provides financial reports at each Executive Committee and Board of Directors meetings. Additionally they oversee the scholarship program and special gifts endowment program. The treasurer will assist in preparing for the mission goal and submit records for financial review at the end of each biennium. They will submit one or more names for assistant to the treasurer.

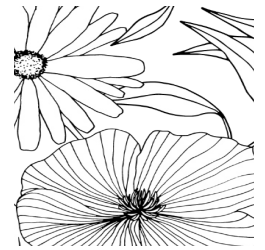
**Pastoral Counselor** (4 year term) will serve the LWML Rocky Mountain District in an advisory capacity, attend district meetings, and attend the district convention. He is a non-voting member of the Executive Committee.

**Nominating Committee** (2 year term) should submit two candidates for each executive office to be filled for the biennium, nine candidates for the nominating committee and two candidates for Pastoral Counselor. Also a report should be submitted to the *Tidings* prior to the convention, and printed ballots should be prepared.

**Prayerfully consider these offices and those who could fill them.**



# FALL RALLIES SCHEDULE



## FALL RALLY NOTES

Here are the dates for the Fall Rallies. \*We have one down and nine to go!

August 25.....Rio Grande Zone..Ascension.....El Paso, TX

September 16....Northern Zone.....Peace With Christ.....Fort Collins, CO  
Pecos Zone.....Shepherd of the Hills....Ruidoso, NM

September 23....Northeastern Zone....St. John's.....Yuma, CO  
Southern Zone.....Immanuel.....Colorado Springs, CO

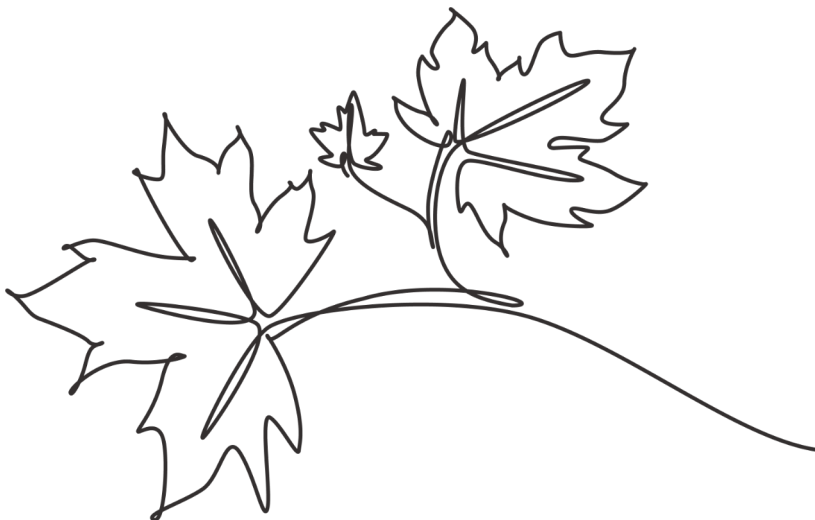
September 30....Four Corners Zone.....St. Paul's.....Durango, CO  
South Central Zone.....Ascension.....Littleton, CO

October 14.....North Central.....Faith Lutheran.....North Denver, CO  
Western Zone.....Redeemer.....Delta, CO

October 21.....Northern New Mexico Zone....Christ Lutheran....Albuquerque, NM

\*Zone Presidents please delegate someone to take photos at your rally and send them to *Tidings* editor Sue Giddings ([sueg851@gmail.com](mailto:sueg851@gmail.com)) for inclusion in the November/December issue. We are always excited to receive news from our zones as well, so let us hear from you.

connect with us \_\_\_\_\_





Belinda  
Burmeister

## A HAPPENING IN THE DISTRICT

# RIO GRANDE ZONE RALLY

Thirty-three ladies and gentlemen of the Rio Grande Zone met at Ascension Lutheran Church in El Paso on August 26, 2023, for their Fall Rally. In the morning portion of our day, we were led with a Devotion from Rev Bill Heithold, Pastor Counselor, followed by the LWML, *Joy in the Journey* Bible Study led by our Christian Life Chairman, Jill Clark. Belinda Burmeister, President, shared her favorite things about the LWML Convention held in Milwaukee, WI. Those included *Wake Up in the Word* with CPH authors, Michelle Diercks on

Friday and Donna Snow on Saturday as well as listening to some of the missionaries we have supported through Mission Grants. The Friday and Saturday lunches that featured a closer look with LAMP and with missionary families serving in Asia and Latin America/Caribbean were also a convention highlight.

Following lunch we heard from Shelley Stewart, RMD President via video and attended to the business of the zone including elections. The day rounded out with a dedication of the Christmas gifts collected by our groups for the children of Ysleta and Pastor sent us home with prayer.



Ron and Sally put an estate plan together thirty years ago. Just recently, they began reviewing this plan, with the help of their LWML Gift Planning Counselor, getting them ready to go to their attorney for updates.

One evening over dinner, Sally said to Ron, "You know, I've been thinking about our plan. Thirty years ago when we put it together, we didn't spend much time talking with each other about what was on our hearts. We certainly didn't pray about it. We just got it done before we left on our trip to Europe. I feel differently this time."

Ron responded, "I am glad to hear you say that because I have been feeling the same way. I really want to aim our gift to ministry to the scholarship fund in our congregation's endowment. The school is the place where our Church connects with new families. Every year, dozens of new people are being baptized because of the school."

Sally said, "I couldn't agree more. Can we pray about those families that will be touched in the future through the nurturing, loving, environment of our school?"

They prayed. They wept. They found strong encouragement to do their work and adjust their estate plans.

All assets within your estate are God's gifts which you will be gifting to family and ministry when the Lord calls you home. It is good to learn how to pray for those who will be receiving these gifts. Aiming gifts at people or ministries with whom the Lord has engaged you regularly in life is the opportunity to make this gifting personal. If there has been a specific ministry for which you have volunteered, make a gift. If there is a specific family member who has special needs, make a gift. Then remember to pray for these specific things, thanking God for your involvement with them.

Your LWML Gift Planning Counselor can help you articulate these purposes. Contact Carol at [Carol.vonSoosten@lwnd.org](mailto:Carol.vonSoosten@lwnd.org); by Phone: 800-741-4138; Email Carol at [lwmlgiftplan.org](http://lwmlgiftplan.org) or our Rocky Mountain District-Colorado Advocate Elizabeth Weber by Email: [weber4342@acsol.net](mailto:weber4342@acsol.net) or on her Cell: 970-361-0794.



Beth Weber

## GIFTS OF LOVE

## OPPORTUNITIES FOR SERVICE

Have you ever considered serving on a district committee? Committees work best with three members. As they say, *Many hands make light work*. Many of our district committees are lacking one or more members. Committees need new ideas and a willingness to serve the LWML RMD.

Following is a list of committees that

need your help as we look ahead to the next district convention: Mission Grants, Teen, Christian Life, Scholarship, Young Women, and Heart to Heart Sisters.

Contact Shelley Stewart, President, or Sue Fraunfeld, Nominating Committee Chairman. Emails are listed on the last page of *Tidings*.



## SERVICE OPPORTUNITIES

# contact us

---

## PRESIDENT

Shelley Stewart

[president@lwmlrmd.org](mailto:president@lwmlrmd.org)

## CHRISTIAN LIFE VP

Christie Peebles

[christianlife@lwmlrmd.org](mailto:christianlife@lwmlrmd.org)

## COMMUNICATIONS VP

Lesley Nordmeyer

[communications@lwmlrmd.org](mailto:communications@lwmlrmd.org)

## GOSPEL OUTREACH VP

Andi Noblitt

[missions@lwmlrmd.org](mailto:missions@lwmlrmd.org)

## SERVANT RESOURCES VP

Christina Bean

[resources@lwmlrmd.org](mailto:resources@lwmlrmd.org)

## RECORDING SECRETARY

Margaret Blazek

[secretary@lwmlrmd.org](mailto:secretary@lwmlrmd.org)

## TREASURER

Yvonne Steeby

[treasurer@lwmlrmd.org](mailto:treasurer@lwmlrmd.org)

## JR. PASTORAL COUNSELOR

Pastor Duane Meissner

[jrpastoralcounselor@lwmlrmd.org](mailto:jrpastoralcounselor@lwmlrmd.org)

## SR. PASTORAL COUNSELOR

Pastor Pete Scheele

[srpastoralcounselor@lwmlrmd.org](mailto:srpastoralcounselor@lwmlrmd.org)

## ASSISTANT TO THE PRESIDENT

Mona Book

[assistant2president@lwmlrmd.org](mailto:assistant2president@lwmlrmd.org)

## ASSISTANT TO THE TREASURER

Nora Sotak

[assistant2treasurer@lwmlrmd.org](mailto:assistant2treasurer@lwmlrmd.org)

## TIDINGS EDITOR

Sue Giddings

[tidings@lwmlrmd.org](mailto:tidings@lwmlrmd.org)

## PLANNER

Becky Meyer

[planner@lwmlrmd.org](mailto:planner@lwmlrmd.org)

## PARLIAMENTARIAN

Barbara Wertz

[parliamentarian@lwmlrmd.org](mailto:parliamentarian@lwmlrmd.org)

## CONVENTION COORDINATOR

Chris Bostron

[events@lwmlrmd.org](mailto:events@lwmlrmd.org)

## CONVENTION CO-CHAIRMAN

Nancy Kraft & Colleen Spahr

[convention@lwmlrmd.org](mailto:convention@lwmlrmd.org)

## RETREAT CHAIRMAN

Belinda Burmeister

[retreat@lwmlrmd.org](mailto:retreat@lwmlrmd.org)

## CONVENTION REGISTRAR

Joey Schilling

[registrar@lwmlrmd.org](mailto:registrar@lwmlrmd.org)

## ARCHIVIST-HISTORIAN

Susan Avila

[arch-hist@lwmlrmd.org](mailto:arch-hist@lwmlrmd.org)

## PRAYERS

Janet Krogh

[prayers@lwmlrmd.org](mailto:prayers@lwmlrmd.org)

## SOCIAL MEDIA ADMINISTRATOR

Lori Schick

[socialmedia@lwmlrmd.org](mailto:socialmedia@lwmlrmd.org)

## MISSION SERVANTS COMMITTEE CHAIRMAN

Linda Harsh

[missionservants@lwmlrmd.org](mailto:missionservants@lwmlrmd.org)

## SCHOLARSHIP CHAIRMAN

Sue Frauenfeld

[scholarships@lwmlrmd.org](mailto:scholarships@lwmlrmd.org)

## COMMITTEE ON YOUNG WOMEN CHAIRMAN

Christina Bean

[ywr@lwmlrmd.org](mailto:ywr@lwmlrmd.org)

## TEENS COMMITTEE CHAIRMAN TBD

[teens@lwmlrmd.org](mailto:teens@lwmlrmd.org)

## HEART TO HEART SISTERS COMMITTEE CHAIRMAN

Heidi Norton

[h2h@lwmlrmd.org](mailto:h2h@lwmlrmd.org)

## NOMINATING COMMITTEE CHAIRMAN

Sue Frauenfeld

[nomcom@lwmlrmd.org](mailto:nomcom@lwmlrmd.org)

## STRUCTURE COMMITTEE CHAIRMAN

Marilyn Gras

[structure@lwmlrmd.org](mailto:structure@lwmlrmd.org)

*And the peace of God,  
which surpasses all  
understanding,  
will guard your hearts  
and your minds  
in Christ Jesus.*

Philippians 4:7

# connect with us

---

Facebook  
[LWML.RMD](#)

Instagram  
[lwmlrmd](#)

Website  
[lwmlrmd.org](#)

Email  
[hello@lwmlrmd.org](mailto:hello@lwmlrmd.org)